

Flat Idler Pulley

Idlers are used to take-up extra belt length and provide adjustment for tensioning belt drives. Idler pulleys and sprockets can alter belt paths and clear obstructions.

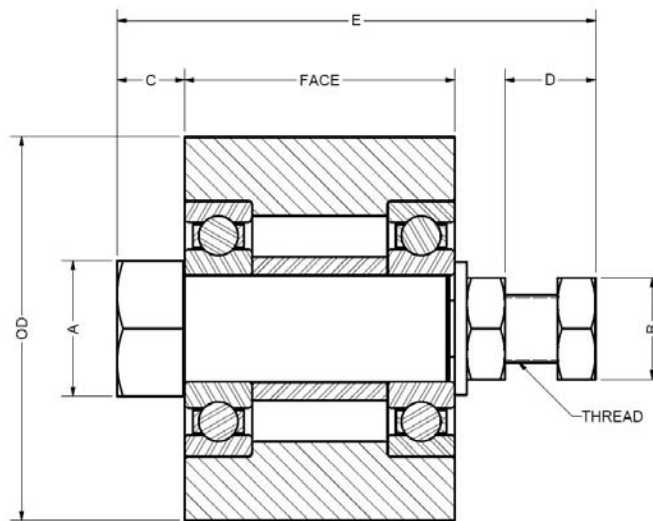
Markets/Applications

Recommended for drives with limited take-up or no center distance adjustment. Idlers may remain in a fixed location or may be adjustable to allow belt pre-tension take-up.

Features/Advantages

- Idler sprockets, flat idlers and idler bushings contain sealed ball bearings and an integral shaft for mounting to adjustable idler brackets.
- Lubrication and maintenance are not required.
- Idler assembly may consist of: idler sprocket and bracket, flat idler and bracket, standard sheave or sprocket used with an idler bearing and idler bracket.

IDLERS



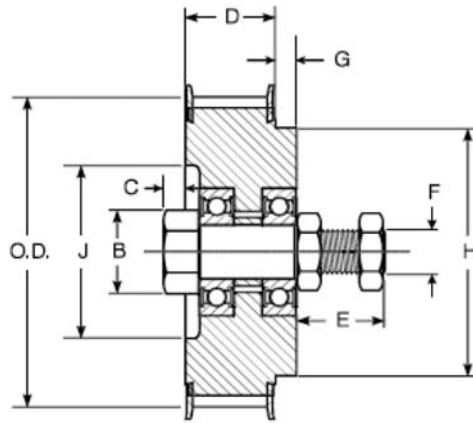
Flat Idler Pulley

| Part No. | Product No. | Use with Synchronous Belt | | Use with V-Belt | Outside Dia. (In.) | Face Width (In) | A | B | C | D | E | Threads | Bearing Number | Wt. Ea. (Lbs.) |
|--------------------|-------------|---------------------------|--------------------|----------------------------------|--------------------|-----------------|------|------|------|------|-------|---------|----------------|----------------|
| | | Pitch | Width | | | | | | | | | | | |
| 4.25X1.25-IDL-FLAT | 7723-4125 | 8mm, L, H | Up to 21mm (0.85") | 1-2 Strand 3V/3VX, 1 Strand A/AX | 4.25 | 1.25 | 1.13 | 1.13 | .64 | 1.30 | 3.75 | 3/4-16 | 6304 | 5.20 |
| 4.25X2.00-IDL-FLAT | 7723-4200 | 8mm, L, H | Up to 38mm (1.5") | 3-4 Strand 3V/3VX, 2 Strand A/AX | 4.25 | 2.00 | 1.50 | 1.13 | .63 | 1.32 | 4.50 | 3/4-16 | 6304 | 7.50 |
| 4.25X3.00-IDL-FLAT | 7723-4300 | 8mm, L, H | Up to 62mm (2.4") | 5-6 Strand 3V/3VX, 3 Strand A/AX | 4.25 | 3.00 | 1.50 | 1.13 | .75 | 1.32 | 5.63 | 3/4-16 | 6304 | 10.60 |
| 4.25X4.00-IDL-FLAT | 7723-4400 | 8mm, L, H | Up to 85mm (3.3") | 8 Strand 3V/3VX, 4 Strand A/AX | 4.25 | 4.00 | 1.50 | 1.13 | .75 | 1.32 | 6.63 | 3/4-16 | 6304 | 13.60 |
| 6.50X1.75-IDL-FLAT | 7723-6175 | 14mm | Up to 20mm | 1 Strand B/BX | 6.50 | 1.75 | 2.00 | 1.50 | 1.04 | 1.96 | 5.69 | 1-14 | 6308 | 17.10 |
| 6.50X2.75-IDL-FLAT | 7723-6275 | 14mm | Up to 55mm | 2-3 Strand B/BX | 6.50 | 2.75 | 2.00 | 1.50 | .13 | 2.10 | 5.69 | 1-14 | 6308 | 23.00 |
| 6.50X4.25-IDL-FLAT | 7723-6425 | 14mm | Up to 90mm | 4-5 Strand B/BX | 6.50 | 4.25 | 2.38 | 1.50 | .13 | 1.98 | 7.06 | 1-14 | 6308 | 33.00 |
| 6.50X5.75-IDL-FLAT | 7723-6575 | 14mm | Up to 125mm | 6 Strand B/BX | 6.50 | 5.75 | 2.38 | 1.50 | .99 | 1.98 | 9.31 | 1-14 | 6308 | 45.00 |
| 6.50X7.50-IDL-FLAT | 7723-6750 | 14mm | Up to 170mm | 8 Strand B/BX | 6.50 | 7.50 | 2.38 | 1.50 | 1.00 | 1.98 | 11.19 | 1-14 | 6308 | 57.01 |



Idler Sprockets

IDLERS



Poly Chain® GT® Carbon™ Idler Sprocket

| Part No. | Product No. | Use With | Belt Width | No. of Teeth | Outside Dia. (In.) | B Ref. (In) | C (In) | D (In) | E Ref. (In) | F (Threads) (In) | G Ref. (In) | H (In) | J (In) | Bearing Number | Wt. Ea. (Lbs.) |
|--------------|-------------|------------|------------|--------------|--------------------|-------------|--------|--------|-------------|------------------|-------------|--------|--------|----------------|----------------|
| 12-IDL-SPRK | 7720-1500 | 8mm Pitch | 12 | 32 | 3.145 | 1.25 | .50 | .85 | 1.56 | 3/4 - 16 | .94 | 2.75 | — | 6304 | 3.80 |
| 21-IDL-SPRK | 7720-1510 | 8mm Pitch | 21 | 32 | 3.145 | 1.25 | .50 | 1.24 | 1.56 | 3/4 - 16 | .56 | 2.75 | — | 6304 | 3.88 |
| 36-IDL-SPRK | 7720-1520 | 8mm Pitch | 36 | 36 | 3.546 | 1.91 | .75 | 1.86 | 1.63 | 3/4 - 16 | — | — | — | 6306 | 5.14 |
| 62-IDL-SPRK | 7720-1530 | 8mm Pitch | 62 | 36 | 3.546 | 1.91 | .75 | 2.91 | 1.69 | 3/4 - 16 | .69 | 3.13 | — | 6306 | 9.69 |
| 20-IDL-SPRK | 7720-1600 | 14mm Pitch | 20 | 30 | 5.153 | 2.55 | 1.00 | 1.36 | 2.25 | 1 - 14 | 1.00 | 4.38 | — | 6308 | 12.55 |
| 37-IDL-SPRK | 7720-1610 | 14mm Pitch | 37 | 30 | 5.153 | 2.55 | 1.00 | 2.06 | 2.25 | 1 - 14 | .25 | 4.38 | — | 6308 | 13.46 |
| 68-IDL-SPRK | 7720-1620 | 14mm Pitch | 68 | 34 | 5.855 | 3.38 | .56 | 3.33 | 2.25 | 1 - 14 | 1.00 | 4.88 | 4.34 | 6310 | 26.03 |
| 90-IDL-SPRK | 7720-1640 | 14mm Pitch | 90 | 34 | 5.855 | 3.38 | .31 | 4.20 | 2.25 | 1 - 14 | 1.00 | 4.88 | 4.34 | 6310 | 32.18 |
| 125-IDL-SPRK | 7720-1630 | 14mm Pitch | 125 | 34 | 5.855 | 3.38 | .19 | 5.63 | 2.25 | 1 - 14 | 1.09 | 4.88 | 4.34 | 6310 | 36.45 |

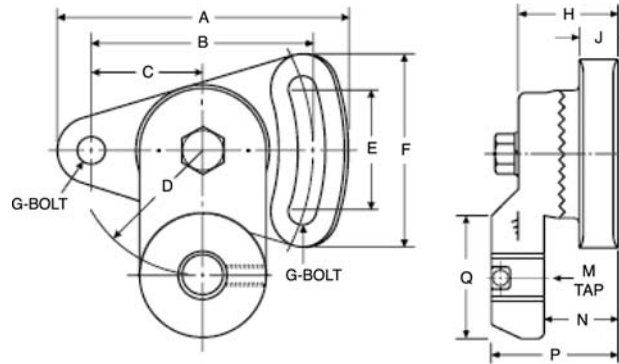
Nickel Plate Poly Chain® GT® Carbon™ Idler Sprocket

| Part No. | Product No. | Use With | Belt Width | No. of Teeth | Outside Dia. (In.) | B Ref. (In) | C (In) | D (In) | E Ref. (In) | F (Threads) (In) | G Ref. (In) | H (In) | J (In) | Wt. Ea. (Lbs.) |
|-----------------|-------------|--------------------------------|------------|--------------|--------------------|-------------|--------|--------|-------------|------------------|-------------|--------|--------|----------------|
| NP-12-IDLR-SPRK | 7720-1501 | 8mm Pitch Poly Chain GT Carbon | — | 32 | 3.145 | 1.25 | .50 | .85 | 1.56 | 3/4 - 16 | .94 | 2.75 | — | 3.80 |
| NP-21-IDLR-SPRK | 7720-1511 | 8mm Pitch Poly Chain GT Carbon | — | 32 | 3.145 | 1.25 | .50 | 1.24 | 1.56 | 3/4 - 16 | .56 | 2.75 | — | 3.88 |

PowerGrip® GT®2 Idler Sprocket

| Part No. | Product No. | Use With | Belt Width | No. of Teeth | Outside Dia. (In.) | B Ref. (In) | C (In) | D (In) | E Ref. (In) | F (Threads) (In) | G Ref. (In) | H (In) | J (In) | Bearing Number | Wt. Ea. (Lbs.) |
|-------------|-------------|------------|------------|--------------|--------------------|-------------|--------|--------|-------------|------------------|-------------|--------|--------|----------------|----------------|
| 20-SPK2-IDL | 7720-1740 | 8mm Pitch | 20 | 32 | 3.154 | 1.25 | .50 | 1.24 | 1.56 | 3/4 - 16 | .56 | 2.75 | — | 6304 | 1.10 |
| 30-SPK2-IDL | 7720-1750 | 8mm Pitch | 30 | 36 | 3.555 | 1.91 | .75 | 1.86 | 1.63 | 3/4 - 16 | — | — | — | 6306 | 2.00 |
| 40-SPK2-IDL | 7720-1850 | 14mm Pitch | 40 | 30 | 5.153 | 2.55 | 1.00 | 2.06 | 2.25 | 1 - 14 | .25 | 4.38 | — | 6308 | 12.00 |
| 55-SPK2-IDL | 7720-1860 | 14mm Pitch | 55 | 34 | 5.855 | 3.38 | .56 | 3.33 | 2.25 | 1 - 14 | 1.00 | 4.88 | 4.34 | 6310 | 15.60 |

Idler Brackets



IDLERS

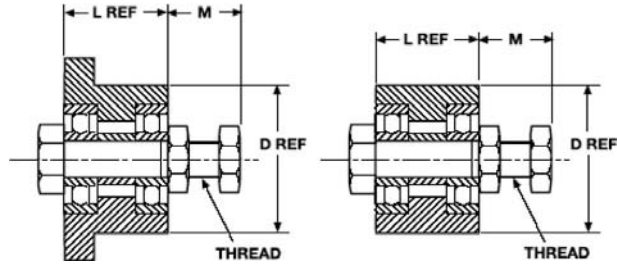
Idler Brackets

| Part No. | Tensioner Part No. | Use With | A (In) | B (In) | C (In) | D (In) | E (In) | F (In) | G (In) | H (In) | J (In) | M (Threads) | N (In) | P (In) | Q (In) | Wt. Ea. (Lbs.) |
|-------------|--------------------|--|--------|--------|--------|--------|--------|--------|--------|--------|--------|-------------|--------|--------|--------|----------------|
| 5-IDL-BRAK | 7720-1005 | 1610-IDL-BUSH | 4.62 | 3.50 | 1.75 | 2.00 | 2.06 | 3.06 | .38 | 1.63 | .62 | 5/8 - 18 | 1.16 | 2.01 | 2.00 | 2.80 |
| 10-IDL-BRAK | 7720-1010 | 8mm Pitch Idler Sprockets, 4.25" OD Flat Idler Pulleys, 2012-IDL-BUSH, 2517-IDL-BUSH, 20-IDL-BUSH (SK) | 4.63 | 3.50 | 1.75 | 2.00 | 2.06 | 3.06 | .38 | 1.50 | .56 | 3/4 - 16 | 1.00 | 1.88 | 1.75 | 3.40 |
| 20-IDL-BRAK | 7720-1020 | 14mm Pitch Idler Sprockets, 6.50" OD Flat Idler Pulleys, 30-IDL-BUSH (SF), 40-IDL-BUSH (E) | 6.94 | 5.25 | 2.63 | 5.00 | 3.00 | 4.56 | .63 | 2.38 | 1.00 | 1 - 14 | 1.63 | 2.94 | 2.75 | 11.20 |

Nickel Plated Idler Brackets

| Part No. | Tensioner Part No. | Use With | A (In) | B (In) | C (In) | D (In) | E (In) | F (In) | G (In) | H (In) | J (In) | M (Threads) | N (In) | P (In) | Q (In) | Wt. Ea. (Lbs.) |
|--------------------|--------------------|---|--------|--------|--------|--------|--------|--------|--------|--------|--------|-------------|--------|--------|--------|----------------|
| NP-10-IDLR-BRACKET | 7720-1011 | 8mm Pitch Idler Sprockets 2012-IDL-BUSH, 2517-IDL-BUSH, 20-IDL-BUSH (SK) | 4.63 | 3.50 | 1.75 | 2.00 | 2.06 | 3.06 | .38 | 1.50 | .56 | 3/4 - 16 | 1.00 | 1.88 | 1.75 | 3.40 |
| NP-20-IDLR-BRACKET | 7720-1021 | 14mm Pitch Idler Sprockets, 30-IDL-BUSH (SF), 40-IDL-BUSH (E) | 6.94 | 5.25 | 2.63 | 5.00 | 3.00 | 4.56 | .63 | 2.38 | 1.00 | 1 - 14 | 1.63 | 2.94 | 2.75 | 11.20 |

Idler Bushings



Idler Bushings

| Part No. | Product No. | Style | Size | D (In) | L (In) | M (In) | Threads | Bearing Number | Wt. Ea. (Lbs.) |
|------------------|-------------|-------|------|--------|--------|--------|---------|----------------|----------------|
| 20-IDLR-BUSH(SK) | 7720-1120 | 20 | SK | 2.81 | 1.94 | 1.44 | 3/4-16 | 6003 | 11.00 |
| 30-IDLR-BUSH(SF) | 7720-1130 | 20 | SF | 3.13 | 2.08 | 2.13 | 1-14 | 6204 | 8.60 |
| 40-IDLR-BUSH(E) | 7720-1140 | 20 | E | 3.83 | 2.75 | 2.19 | 1-14 | 6304 | 8.62 |
| 1610-IDLR-BUSH | 7720-2610 | 20 | 1610 | 2.25 | 1.00 | 1.38 | 5/8-18 | 6304 | 1.30 |
| 2012-IDLR-BUSH | 7720-2012 | 20 | 2012 | 2.75 | 1.25 | 1.56 | 3/4-16 | 6206 | 2.30 |
| 2517-IDLR-BUSH | 7720-2517 | 20 | 2517 | 3.38 | 1.75 | 1.56 | 3/4-16 | 6306 | 3.90 |