

# QD® Bushings - English Sizes

## Markets/Applications

Use with all QD style sheaves, sprockets and pulleys.

## Features/Advantages

- Bushings are made to precise tolerances.
- Available in popular bore sizes.

## Notes

Details shown which do not affect drive function or overall weight may be changed without notification.

**WARNING:** Excessive cap-screw torque can cause sheave and/or bushing to break.  
Use of lubricants can result in sheave breakage.



**NOTE: Bushings with standard keyseats do not include keys.**

## Product No. Series 7838 & 7839

Part No.	Product No.	Bore (In.)	Wt. Ea. (Lbs.)
E.7/8	7839-1014	7/8	11.80
E 1.	7839-1100	1	11.65
E 1.1/16	7839-1101	1 1/16	11.50
E 1.1/8	7839-1102	1 1/8	11.46
E 1.3/16	7839-1103	1 3/16	11.40
E 1.1/4	7839-1104	1 1/4	11.33
E 1.5/16	7839-1105	1 5/16	11.26
E 1.3/8	7839-1106	1 3/8	11.13
E 1.7/16	7839-1107	1 7/16	10.94
E 1.1/2	7839-1108	1 1/2	10.86
E 1.5/8	7839-1110	1 5/8	10.69
E 1.11/16	7839-1111	1 11/16	10.56
E 1.3/4	7839-1112	1 3/4	10.46
E 1.7/8	7839-1114	1 7/8	10.16
E 1.15/16	7839-1115	1 15/16	9.99
E 2.	7839-1200	2	9.94
E 2.1/8	7839-1202	2 1/8	9.62
E 2.3/16	7839-1203	2 3/16	9.42
E 2.1/4	7839-1204	2 1/4	9.28
E 2.5/16	7839-1205	2 5/16	9.07
E 2.3/8	7839-1206	2 3/8	8.95
E 2.7/16	7839-1207	2 7/16	8.77
E 2.1/2	7839-1208	2 1/2	8.61
E 2.5/8	7839-1210	2 5/8	8.23
E 2.11/16	7839-1211	2 11/16	8.05
E 2.3/4	7839-1212	2 3/4	7.90
E 2.7/8	7839-1214	2 7/8	7.32
<sup>12</sup> E 2.15/16	7839-1215	2 15/16	7.53
<sup>12</sup> E 3.	7839-1300	3	7.31
<sup>12</sup> E 3.1/8	7839-1302	3 1/8	6.90
<sup>12</sup> E 3.3/16	7839-1303	3 3/16	6.69
<sup>12</sup> E 3.1/4	7839-1304	3 1/4	6.48
<sup>12</sup> E 3.5/16	7839-1305	3 5/16	6.10
<sup>12</sup> E 3.3/8	7839-1306	3 3/8	6.10
<sup>12</sup> E 3.7/16	7839-1307	3 7/16	5.86
<sup>12</sup> E 3.1/2	7839-1308	3 1/2	5.63
F 1.	7839-2100	1	19.41
F 1.1/8	7839-2102	1 1/8	19.15
F 1.3/16	7839-2103	1 3/16	18.00
F 1.1/4	7839-2104	1 1/4	18.99
F 1.3/8	7839-2106	1 3/8	18.68
F 1.7/16	7839-2107	1 7/16	18.56
F 1.1/2	7839-2108	1 1/2	18.48
F 1.9/16	7839-2109	1 9/16	14.00
F 1.5/8	7839-2110	1 5/8	18.15
F 1.11/16	7839-2111	1 11/16	17.91

Part No.	Product No.	Bore (In.)	Wt. Ea. (Lbs.)
F 1.3/4	7839-2112	1 3/4	16.77
F 1.13/16	7839-2113	1 13/16	17.62
F 1.7/8	7839-2114	1 7/8	16.41
F 1.15/16	7839-2115	1 15/16	17.23
F 2.	7839-2200	2	16.97
F 2.1/8	7839-2202	2 1/8	16.70
F 2.3/16	7839-2203	2 3/16	16.54
F 2.1/4	7839-2204	2 1/4	16.25
F 2.5/16	7839-2205	2 5/16	15.96
F 2.3/8	7839-2206	2 3/8	15.79
F 2.7/16	7839-2207	2 7/16	15.56
F 2.1/2	7839-2208	2 1/2	15.37
F 2.5/8	7839-2210	2 5/8	14.86
F 2.11/16	7839-2211	2 11/16	13.42
F 2.3/4	7839-2212	2 3/4	14.37
F 2.13/16	7839-2213	2 13/16	14.00
F 2.7/8	7839-2214	2 7/8	13.75
F 2.15/16	7839-2215	2 15/16	13.47
F 3.	7839-2300	3	13.20
F 3.1/8	7839-2302	3 1/8	12.67
F 3.3/16	7839-2303	3 3/16	14.00
F 3.1/4	7839-2304	3 1/4	12.00
<sup>12</sup> F 3.3/8	7839-2306	3 3/8	12.05
<sup>12</sup> F 3.7/16	7839-2307	3 7/16	11.73
<sup>12</sup> F 3.1/2	7839-2308	3 1/2	11.17
<sup>12</sup> F 3.5/8	7839-2310	3 5/8	10.53
<sup>12</sup> F 3.11/16	7839-2311	3 11/16	14.00
<sup>12</sup> F 3.3/4	7839-2312	3 3/4	9.89
<sup>12</sup> F 3.7/8	7839-2314	3 7/8	9.26
<sup>12</sup> F 3.15/16	7839-2315	3 15/16	8.11
<sup>13</sup> F 4.	7839-2400	4	7.96
J 1.1/2	7839-3108	1 1/2	28.97
J 1.5/8	7839-3110	1 5/8	28.61
J 1.3/4	7839-3112	1 3/4	28.28
J 1.7/8	7839-3114	1 7/8	27.79
J 1.15/16	7839-3115	1 15/16	27.53
J 2.	7839-3200	2	27.33
J 2.1/8	7839-3202	2 1/8	26.74
J 2.3/16	7839-3203	2 3/16	26.37
J 2.1/4	7839-3204	2 1/4	26.32
J 2.3/8	7839-3206	2 3/8	25.65
J 2.7/16	7839-3207	2 7/16	25.38
J 2.1/2	7839-3208	2 1/2	25.05
J 2.5/8	7839-3210	2 5/8	24.50
J 2.11/16	7839-3211	2 11/16	24.18
J 2.3/4	7839-3212	2 3/4	23.86

<sup>12</sup> Shallow keyway.  
<sup>13</sup> No keyway.





# QD® Bushings - English Sizes

## Product No. Series 7838 & 7839 (continued)

Part No.	Product No.	Bore (In.)	Wt. Ea. (Lbs.)
J 2.7/8	7839-3214	2 7/8	23.15
J 2.15/16	7839-3215	2 15/16	22.73
J 3.	7839-3300	3	22.43
J 3.1/8	7839-3302	3 1/8	21.68
J 3.3/16	7839-3303	3 3/16	21.35
J 3.1/4	7839-3304	3 1/4	20.98
J 3.3/8	7839-3306	3 3/8	20.10
J 3.7/16	7839-3307	3 7/16	19.71
J 3.1/2	7839-3308	3 1/2	19.25
J 3.5/8	7839-3310	3 5/8	18.44
J 3.11/16	7839-3311	3 11/16	18.04
J 3.3/4	7839-3312	3 3/4	17.62
<sup>12</sup> J 3.7/8	7839-3314	3 7/8	17.80
<sup>12</sup> J 3.15/16	7839-3315	3 15/16	17.14
<sup>12</sup> J 4.	7839-3400	4	16.62
<sup>12</sup> J 4.1/8	7839-3402	4 1/8	15.69
<sup>12</sup> J 4.3/16	7839-3403	4 3/16	14.55
<sup>12</sup> J 4.1/4	7839-3404	4 1/4	14.68
<sup>12</sup> J 4.3/8	7839-3406	4 3/8	14.00
<sup>12</sup> J 4.7/16	7839-3407	4 7/16	13.18
<sup>12</sup> J 4.1/2	7839-3408	4 1/2	12.67
JA.1/2	7838-0008	1/2	.46
JA.9/16	7838-0009	9/16	.46
JA.5/8	7838-0010	5/8	.45
JA.11/16	7838-0011	11/16	.43
JA.3/4	7838-0012	3/4	.41
JA.13/16	7838-0013	13/16	.40
JA.7/8	7838-0014	7/8	.37
JA.15/16	7838-0015	15/16	.35
JA 1.	7838-0100	1	.33
<sup>12</sup> JA 1.1/16	7838-0101	1 1/16	.34
<sup>12</sup> JA 1.1/8	7838-0102	1 1/8	.31
<sup>12</sup> JA 1.3/16	7838-0103	1 3/16	.29
<sup>13</sup> JA 1.1/4	7838-0104	1 1/4	.25
M 2.	7839-4200	2	62.49
M 2.3/16	7839-4203	2 3/16	61.38
M 2.1/4	7839-4204	2 1/4	61.14
M 2.3/8	7839-4206	2 3/8	60.32
M 2.7/16	7839-4207	2 7/16	59.97
M 2.1/2	7839-4208	2 1/2	59.48
M 2.5/8	7839-4210	2 5/8	58.69
M 2.11/16	7839-4211	2 11/16	47.80
M 2.3/4	7839-4212	2 3/4	57.86
M 2.7/8	7839-4214	2 7/8	29.07
M 2.15/16	7839-4215	2 15/16	56.17
M 3.	7839-4300	3	55.55
M 3.1/8	7839-4302	3 1/8	54.00
M 3.3/16	7839-4303	3 3/16	53.84
M 3.1/4	7839-4304	3 1/4	53.42
M 3.3/8	7839-4306	3 3/8	52.21
M 3.7/16	7839-4307	3 7/16	51.61
M 3.1/2	7839-4308	3 1/2	51.12
M 3.5/8	7839-4310	3 5/8	50.08
M 3.11/16	7839-4311	3 11/16	49.00
M 3.3/4	7839-4312	3 3/4	48.47
M 3.7/8	7839-4314	3 7/8	47.03
M 3.15/16	7839-4315	3 15/16	46.26
M 4.	7839-4400	4	47.80
M 4.1/8	7839-4402	4 1/8	44.24
M 4.3/16	7839-4403	4 3/16	43.64
M 4.1/4	7839-4404	4 1/4	42.81
M 4.3/8	7839-4406	4 3/8	41.46
M 4.7/16	7839-4407	4 7/16	40.60
M 4.1/2	7839-4408	4 1/2	39.89

Part No.	Product No.	Bore (In.)	Wt. Ea. (Lbs.)
M 4.11/16	7839-4411	4 11/16	36.98
M 4.3/4	7839-4412	4 3/4	36.25
<sup>12</sup> M 4.7/8	7839-4414	4 7/8	36.89
<sup>12</sup> M 4.15/16	7839-4415	4 15/16	36.78
<sup>12</sup> M 5.	7839-4500	5	35.49
<sup>12</sup> M 5.1/4	7839-4504	5 1/4	31.80
<sup>12</sup> M 5.7/16	7839-4507	5 7/16	29.06
<sup>12</sup> M 5.1/2	7839-4508	5 1/2	28.04
N 2.7/16	7839-5207	2 7/16	87.57
N 2.15/16	7839-5215	2 15/16	80.00
N 3.7/16	7839-5307	3 7/16	80.00
N 3.3/4	7839-5312	3 3/4	80.00
N 3.7/8	7839-5314	3 7/8	80.00
N 3.15/16	7839-5315	3 15/16	80.00
N 4.	7839-5400	4	80.00
N 4.3/16	7839-5403	4 3/16	80.00
N 4.1/4	7839-5404	4 1/4	80.00
N 4.7/16	7839-5407	4 7/16	64.23
N 4.1/2	7839-5408	4 1/2	60.00
N 4.3/4	7839-5412	4 3/4	80.00
N 4.7/8	7839-5414	4 7/8	80.00
N 4.15/16	7839-5415	4 15/16	56.06
N 5.	7839-5500	5	54.89
N 5.1/8	7839-5502	5 1/8	52.00
N 5.1/4	7839-5504	5 1/4	70.00
<sup>12</sup> N 5.1/2	7839-5508	5 1/2	49.02
N 5.3/4	7839-5512	5 3/4	80.00
<sup>12</sup> N 5.7/8	7839-5514	5 7/8	44.00
P 3.7/16	7839-6307	3 7/16	134.00
P 3.15/16	7839-6315	3 15/16	122.00
P 4.7/16	7839-6407	4 7/16	114.00
P 4.1/2	7839-6408	4 1/2	125.00
P 4.15/16	7839-6415	4 15/16	104.00
P 5.	7839-6500	5	125.00
P 5.1/2	7839-6508	5 1/2	125.00
P 5.15/16	7839-6515	5 15/16	86.84
<sup>12</sup> P 6.	7839-6600	6	70.00
P 6.1/2	7839-6608	6 1/2	125.00
<sup>12</sup> P 7.	7839-6700	7	68.00
SD.1/2	7838-3008	1/2	2.07
SD.9/16	7838-3009	9/16	2.05
SD.5/8	7838-3010	5/8	2.03
SD.11/16	7838-3011	11/16	2.00
SD.3/4	7838-3012	3/4	1.96
SD.13/16	7838-3013	13/16	2.01
SD.7/8	7838-3014	7/8	1.88
SD.15/16	7838-3015	15/16	1.85
SD 1.	7838-3100	1	1.80
SD 1.1/16	7838-3101	1 1/16	1.79
SD 1.1/8	7838-3102	1 1/8	1.72
SD 1.3/16	7838-3103	1 3/16	1.67
SD 1.1/4	7838-3104	1 1/4	1.62
SD 1.5/16	7838-3105	1 5/16	1.55
SD 1.3/8	7838-3106	1 3/8	1.50
SD 1.7/16	7838-3107	1 7/16	1.44
SD 1.1/2	7838-3108	1 1/2	1.36
SD 1.9/16	7838-3109	1 9/16	1.29
SD 1.5/8	7838-3110	1 5/8	1.29
<sup>12</sup> SD 1.11/16	7838-3111	1 11/16	1.27
<sup>12</sup> SD 1.3/4	7838-3112	1 3/4	1.28
<sup>12</sup> SD 1.13/16	7838-3113	1 13/16	1.15
<sup>12</sup> SD 1.7/8	7838-3114	1 7/8	1.07
<sup>12</sup> SD 1.15/16	7838-3115	1 15/16	1.00
<sup>13</sup> SD 2.	7838-3200	2	1.30

<sup>12</sup> Shallow keyway.<sup>13</sup> No keyway.

# QD® Bushings - English Sizes

## Product No. Series 7838 & 7839 (continued)

Part No.	Product No.	Bore (In.)	Wt. Ea. (Lbs.)
SDS.1/2	7838-2008	1/2	1.65
SDS.9/16	7838-2009	9/16	1.65
SDS.5/8	7838-2010	5/8	1.61
SDS.11/16	7838-2011	11/16	1.60
SDS.3/4	7838-2012	3/4	1.58
SDS.13/16	7838-2013	13/16	1.54
SDS.7/8	7838-2014	7/8	1.54
SDS.15/16	7838-2015	15/16	1.50
SDS 1.	7838-2100	1	1.46
SDS 1.1/16	7838-2101	1 1/16	1.43
SDS 1.1/8	7838-2102	1 1/8	1.38
SDS 1.3/16	7838-2103	1 3/16	1.36
SDS 1.1/4	7838-2104	1 1/4	1.32
SDS 1.5/16	7838-2105	1 5/16	1.26
SDS 1.3/8	7838-2106	1 3/8	1.24
SDS 1.7/16	7838-2107	1 7/16	1.19
SDS 1.1/2	7838-2108	1 1/2	1.15
SDS 1.9/16	7838-2109	1 9/16	1.11
SDS 1.5/8	7838-2110	1 5/8	1.08
<sup>12</sup> SDS 1.11/16	7838-2111	1 11/16	1.08
<sup>12</sup> SDS 1.3/4	7838-2112	1 3/4	1.02
<sup>12</sup> SDS 1.13/16	7838-2113	1 13/16	.98
<sup>12</sup> SDS 1.7/8	7838-2114	1 7/8	.92
<sup>12</sup> SDS 1.15/16	7838-2115	1 15/16	.87
<sup>13</sup> SDS 2.	7838-2200	2	.77
SF.1/2	7838-5008	1/2	5.27
SF.5/8	7838-5010	5/8	5.22
<sup>0</sup> SF.11/16	7838-5011	11/16	5.20
SF.3/4	7838-5012	3/4	5.17
SF.7/8	7838-5014	7/8	5.08
SF.15/16	7838-5015	15/16	5.05
SF 1.	7838-5100	1	5.00
SF 1.1/8	7838-5102	1 1/8	4.90
SF 1.3/16	7838-5103	1 3/16	4.83
SF 1.1/4	7838-5104	1 1/4	4.77
SF 1.5/16	7838-5105	1 5/16	4.71
SF 1.3/8	7838-5106	1 3/8	4.61
SF 1.7/16	7838-5107	1 7/16	4.57
SF 1.1/2	7838-5108	1 1/2	4.48
SF 1.9/16	7838-5109	1 9/16	4.42
SF 1.5/8	7838-5110	1 5/8	4.32
SF 1.11/16	7838-5111	1 11/16	4.31
SF 1.3/4	7838-5112	1 3/4	4.16
SF 1.13/16	7838-5113	1 13/16	4.06
SF 1.7/8	7838-5114	1 7/8	4.00
SF 1.15/16	7838-5115	1 15/16	3.87
SF 2.	7838-5200	2	3.78
SF 2.1/16	7838-5201	2 1/16	3.70
SF 2.1/8	7838-5202	2 1/8	3.57
SF 2.3/16	7838-5203	2 3/16	3.45
SF 2.1/4	7838-5204	2 1/4	3.38
SF 2.5/16	7838-5205	2 5/16	3.32
<sup>12</sup> SF 2.3/8	7838-5206	2 3/8	3.39
<sup>12</sup> SF 2.7/16	7838-5207	2 7/16	3.26
<sup>12</sup> SF 2.1/2	7838-5208	2 1/2	3.16
<sup>12</sup> SF 2.5/8	7838-5210	2 5/8	2.91
<sup>12</sup> SF 2.11/16	7838-5211	2 11/16	2.72
<sup>12</sup> SF 2.3/4	7838-5212	2 3/4	2.59

Part No.	Product No.	Bore (In.)	Wt. Ea. (Lbs.)
<sup>12</sup> SF 2.13/16	7838-5213	2 13/16	3.50
<sup>13</sup> SF 2.7/8	7838-5214	2 7/8	2.35
<sup>13</sup> SF 2.15/16	7838-5215	2 15/16	2.22
SH.1/2	7838-1008	1/2	1.16
SH.9/16	7838-1009	9/16	1.14
SH.5/8	7838-1010	5/8	1.14
SH.11/16	7838-1011	11/16	1.14
SH.3/4	7838-1012	3/4	1.10
SH .13/16	7838-1013	13/16	1.07
SH.7/8	7838-1014	7/8	1.04
SH.15/16	7838-1015	15/16	1.00
SH 1.	7838-1100	1	.98
SH 1.1/16	7838-1101	1 1/16	.94
SH 1.1/8	7838-1102	1 1/8	.91
SH 1.3/16	7838-1103	1 3/16	.88
SH 1.1/4	7838-1104	1 1/4	.84
SH 1.5/16	7838-1105	1 5/16	.82
SH 1.3/8	7838-1106	1 3/8	.80
<sup>12</sup> SH 1.7/16	7838-1107	1 7/16	.79
<sup>12</sup> SH 1.1/2	7838-1108	1 1/2	.75
<sup>12</sup> SH 1.9/16	7838-1109	1 9/16	.90
<sup>12</sup> SH 1.5/8	7838-1110	1 5/8	.64
<sup>13</sup> SH 1.11/16	7838-1111	1 11/16	.55
SK.1/2	7838-4008	1/2	3.77
SK.5/8	7838-4010	5/8	3.72
SK.11/16	7838-4011	11/16	3.70
SK.3/4	7838-4012	3/4	3.61
SK.13/16	7838-4013	13/16	3.53
SK.7/8	7838-4014	7/8	3.58
SK.15/16	7838-4015	15/16	3.52
SK 1.	7838-4100	1	3.45
SK 1.1/16	7838-4101	1 1/16	3.41
SK 1.1/8	7838-4102	1 1/8	3.37
SK 1.3/16	7838-4103	1 3/16	3.31
SK 1.1/4	7838-4104	1 1/4	3.31
SK 1.5/16	7838-4105	1 5/16	3.18
SK 1.3/8	7838-4106	1 3/8	3.12
SK 1.7/16	7838-4107	1 7/16	3.08
SK 1.1/2	7838-4108	1 1/2	3.00
SK 1.9/16	7838-4109	1 9/16	2.95
SK 1.5/8	7838-4110	1 5/8	2.86
SK 1.11/16	7838-4111	1 11/16	2.79
SK 1.3/4	7838-4112	1 3/4	2.88
SK 1.13/16	7838-4113	1 13/16	2.62
SK 1.7/8	7838-4114	1 7/8	2.50
SK 1.15/16	7838-4115	1 15/16	2.42
SK 2.	7838-4200	2	2.32
SK 2.1/16	7838-4201	2 1/16	2.26
SK 2.1/8	7838-4202	2 1/8	2.17
<sup>12</sup> SK 2.3/16	7838-4203	2 3/16	2.21
<sup>12</sup> SK 2.1/4	7838-4204	2 1/4	2.09
<sup>12</sup> SK 2.5/16	7838-4205	2 5/16	1.50
<sup>12</sup> SK 2.3/8	7838-4206	2 3/8	1.91
<sup>12</sup> SK 2.7/16	7838-4207	2 7/16	1.81
<sup>12</sup> SK 2.1/2	7838-4208	2 1/2	2.00
SK 2.9/16	7838-4209	2 9/16	2.00
<sup>13</sup> SK 2.5/8	7838-4210	2 5/8	1.32

<sup>12</sup> Shallow keyway.  
<sup>13</sup> No keyway.  
<sup>0</sup> Available Until Stock Depleted.



## QD® VS Bushings - English Sizes

### Markets/Applications

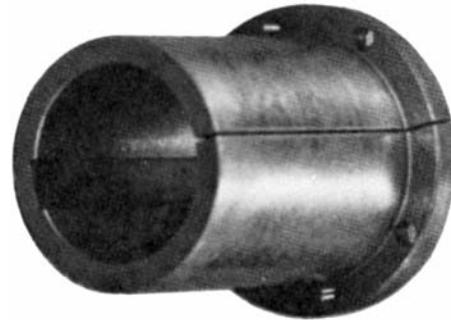
For use with 5VS and 8VS Adjustable Speed Sheaves.

### Features/Advantages

- Available in Short Bore or Long Bore.
- Stocked in popular bore sizes.

### Notes

Details shown which do not affect drive function or overall weight may be changed without notification.



### Product No. Series 7964

#### 5VS

Part No.	Product No.	Length (In.)	Bore (In.)	Wt. Ea. (Lbs.)
5VS-LB 2.3/8	7964-0001	8.46	2 3/8	13.00
5VS-LB 2.7/8	7964-0002	8.46	2 7/8	12.00
5VS-LB 3.3/8	7964-0003	7.00	3 3/8	6.00
5VS-SB 1.7/8	7964-0004	5.27	1 7/8	15.00
5VS-SB 2.1/8	7964-0005	5.27	2 1/8	13.00
5VS-SB 2.3/8	7964-0006	5.27	2 3/8	11.50
5VS-SB 2.7/8	7964-0007	5.27	2 7/8	9.00
5VS-SB 3.3/8	7964-0008	5.27	3 3/8	5.60

#### 8VS

Part No.	Product No.	Length (In.)	Bore (In.)	Wt. Ea. (Lbs.)
8VS-LB 3.3/8	7964-0009	12.36	3 3/8	53.00
8VS-LB 3.7/8	7964-0010	12.36	3 7/8	46.00
8VS-LB 4.3/8	7964-0011	12.36	4 3/8	35.00
8VS-SB 3.3/8	7964-0012	9.33	3 3/8	45.00
8VS-SB 3.7/8	7964-0013	9.33	3 7/8	38.00

## QD<sup>®</sup> Bushings - Metric Sizes

### Markets/Applications

Use with all QD style sheaves, sprockets and pulleys.

### Features/Advantages

- Bushings are made to precise tolerances.
- Available in popular bore sizes.

### Notes

Details shown which do not affect drive function or overall weight may be changed without notification.

**WARNING:** Excessive cap-screw torque can cause sheave and/or bushing to break.  
Use of lubricants can result in sheave breakage.



**NOTE:** Bushings with standard keyseats do not include keys.

### Product No. Series 7840 & 7841

Part No.	Product No.	Bore (mm)	Wt. Ea. (Lbs.)
E 50MM	7841-1200	50	10.15
E 60MM	7841-1206	60	9.03
E 65MM	7841-1209	65	9.00
J 55MM	7841-3203	55	26.40
J 70MM	7841-3212	70	21.00
SD 25MM	7840-3100	25	1.82
SD 30MM	7840-3103	30	1.66
SD 35MM	7840-3106	35	1.49
SD 42MM	7840-3111	42	1.18
SDS 24MM	7840-2015	24	1.50
SDS 25MM	7840-2100	25	1.47
SDS 28MM	7840-2101	28	1.40
SDS 30MM	7840-2103	30	1.35
SDS 35MM	7840-2106	35	1.22
SDS 38MM	7840-2108	38	1.00
SDS 42MM	7840-2111	42	1.02
SF 50MM	7840-5200	50	3.80

Part No.	Product No.	Bore (mm)	Wt. Ea. (Lbs.)
SF 60MM	7840-5206	60	3.14
SH 24MM	7840-1015	24	1.00
SH 28MM	7840-1101	28	.65
SH 30MM	7840-1103	30	.85
SH 35MM	7840-1106	35	1.00
SK 24MM	7840-4015	24	3.50
SK 25MM	7840-4100	25	3.48
SK 30MM	7840-4103	30	3.33
SK 32MM	7840-4104	32	3.22
SK 35MM	7840-4106	35	3.13
SK 38MM	7840-4108	38	3.00
SK 40MM	7840-4109	40	2.91
SK 42MM	7840-4111	42	2.80
SK 48MM	7840-4114	48	2.35
SK 50MM	7840-4200	50	2.39
SK 55MM	7840-4203	55	2.10

NOTE: Metric screws/threads are available on a MTO basis. Minimum lead times may be required.



# Taper-Lock® Bushings - English Sizes

## Markets/Applications

Use with all Taper-Lock style sheaves, sprockets and pulleys.

## Features/Advantages

- Bushings are made to precise tolerances.
- Available in popular bore sizes.

## Notes

Details shown which do not affect drive function or overall weight may be changed without notification.



**NOTE: Bushings with standard keyseats do not include keys.**

## Product No. Series 7848, 7858 & 7859

Part No.	Product No.	Bore (In.)	Wt. Ea. (Lbs.)	Part No.	Product No.	Bore (In.)	Wt. Ea. (Lbs.)
1008.1/2	7858-0008	1/2	.27	1310.9/16	7848-4009	9/16	.64
1008.9/16	7858-0009	9/16	.25	1310.5/8	7848-4010	5/8	.63
1008.5/8	7858-0010	5/8	.24	1310.11/16	7848-4011	11/16	.62
1008.11/16	7858-0011	11/16	.23	1310.3/4	7848-4012	3/4	.61
1008.3/4	7858-0012	3/4	.21	1310.13/16	7848-4013	13/16	.59
1008.13/16	7858-0013	13/16	.20	1310.7/8	7848-4014	7/8	.56
1008.7/8	7858-0014	7/8	.18	1310.15/16	7848-4015	15/16	.54
<sup>12</sup> 1008.15/16	7858-0015	15/16	.17	1310.1.	7848-4100	1	.52
<sup>12</sup> 1008.1.	7858-0100	1	.15	1310.1.1/16	7848-4101	1 1/16	.49
1108.1/2	7858-0108	1/2	.31	1310.1.1/8	7848-4102	1 1/8	.47
1108.9/16	7858-0109	9/16	.31	1310.1.3/16	7848-4103	1 3/16	.44
1108.5/8	7858-0110	5/8	.29	1310.1.1/4	7848-4104	1 1/4	.41
1108.11/16	7858-0111	11/16	.28	1310.1.5/16	7848-4105	1 5/16	.39
1108.3/4	7858-0112	3/4	.27	1310.1.3/8	7848-4106	1 3/8	.35
1108.13/16	7858-0113	13/16	.25	1310.1.7/16	7848-4107	1 7/16	.40
1108.7/8	7858-0114	7/8	.24	1610.1/2	7858-1608	1/2	.85
1108.15/16	7858-0115	15/16	.21	1610.9/16	7858-1609	9/16	.85
1108.1.	7858-0200	1	.19	1610.5/8	7858-1610	5/8	.83
<sup>12</sup> 1108.1.1/16	7858-0201	1 1/16	.19	1610.11/16	7858-1611	11/16	.83
<sup>12</sup> 1108.1.1/8	7858-0202	1 1/8	.16	1610.3/4	7858-1612	3/4	.79
1210.1/2	7858-0508	1/2	.58	1610.13/16	7858-1613	13/16	.84
1210.9/16	7858-0509	9/16	.56	1610.7/8	7858-1614	7/8	.76
1210.5/8	7858-0510	5/8	.54	1610.15/16	7858-1615	15/16	.72
1210.11/16	7858-0511	11/16	.53	1610.1.	7858-1700	1	.71
1210.3/4	7858-0512	3/4	.52	1610.1.1/16	7858-1701	1 1/16	.69
1210.13/16	7858-0513	13/16	.49	1610.1.1/8	7858-1702	1 1/8	.66
1210.7/8	7858-0514	7/8	.48	1610.1.3/16	7858-1703	1 3/16	.63
1210.15/16	7858-0515	15/16	.47	1610.1.1/4	7858-1704	1 1/4	.61
1210.1.	7858-0600	1	.43	1610.1.5/16	7858-1705	1 5/16	.57
1210.1.1/16	7858-0601	1 1/16	.41	1610.1.3/8	7858-1706	1 3/8	.54
1210.1.1/8	7858-0602	1 1/8	.38	1610.1.7/16	7858-1707	1 7/16	.50
1210.1.3/16	7858-0603	1 3/16	.36	1610.1.1/2	7858-1708	1 1/2	.47
1210.1.1/4	7858-0604	1 1/4	.32	<sup>12</sup> 1610.1.9/16	7858-1709	1 9/16	.47
1215.1/2	7858-1008	1/2	.82	<sup>12</sup> 1610.1.5/8	7858-1710	1 5/8	.43
1215.9/16	7858-1009	9/16	.85	<sup>12</sup> 1610.1.11/16	7858-1711	1 11/16	.45
1215.5/8	7858-1010	5/8	.78	1615.1/2	7858-2008	1/2	1.24
1215.11/16	7858-1011	11/16	.81	1615.9/16	7858-2009	9/16	1.30
1215.3/4	7858-1012	3/4	.75	1615.5/8	7858-2010	5/8	1.20
1215.13/16	7858-1013	13/16	.75	1615.11/16	7858-2011	11/16	1.24
1215.7/8	7858-1014	7/8	.68	1615.3/4	7858-2012	3/4	1.16
1215.15/16	7858-1015	15/16	.64	1615.13/16	7858-2013	13/16	1.20
1215.1.	7858-1100	1	.61	1615.7/8	7858-2014	7/8	1.11
1215.1.1/16	7858-1101	1 1/16	.57	1615.15/16	7858-2015	15/16	1.06
1215.1.1/8	7858-1102	1 1/8	.54	1615.1.	7858-2100	1	1.02
1215.1.3/16	7858-1103	1 3/16	.49	1615.1.1/16	7858-2101	1 1/16	.99
1215.1.1/4	7858-1104	1 1/4	.45	1615.1.1/8	7858-2102	1 1/8	.95
1310.1/2	7848-4008	1/2	.66	1615.1.3/16	7858-2103	1 3/16	.91

<sup>12</sup> Shallow keyway.



# Taper-Lock® Bushings - English Sizes

## Product No. Series 7848, 7858 & 7859 (continued)

Part No.	Product No.	Bore (In.)	Wt. Ea. (Lbs.)	Part No.	Product No.	Bore (In.)	Wt. Ea. (Lbs.)
1615 1.1/4	7858-2104	1 1/4	.87	<sup>12</sup> 2517 2.3/8	7858-3206	2 3/8	1.78
1615 1.5/16	7858-2105	1 5/16	.82	<sup>12</sup> 2517 2.7/16	7858-3207	2 7/16	1.69
1615 1.3/8	7858-2106	1 3/8	.77	<sup>12</sup> 2517 2.1/2	7858-3208	2 1/2	1.59
1615 1.7/16	7858-2107	1 7/16	.72	<sup>12</sup> 2517 2.5/8	7858-3210	2 5/8	1.80
1615 1.1/2	7858-2108	1 1/2	.66	<sup>12</sup> 2517 2.11/16	7858-3211	2 11/16	1.43
<sup>12</sup> 1615 1.9/16	7858-2109	1 9/16	.67	2525.3/4	7859-1012	3/4	4.94
<sup>12</sup> 1615 1.5/8	7858-2110	1 5/8	.60	2525.7/8	7859-1014	2 7/8	4.83
<sup>12</sup> 1615 1.11/16	7858-2111	1 11/16	.62	2525 1.	7859-1100	1	4.86
2012.1/2	7858-2508	1/2	1.63	2525 1.1/8	7859-1102	1 1/8	4.58
2012.9/16	7858-2509	9/16	1.61	2525 1.3/16	7859-1103	1 3/16	4.46
2012.5/8	7858-2510	5/8	1.59	2525 1.1/4	7859-1104	1 1/4	4.41
2012.11/16	7858-2511	11/16	1.57	2525 1.3/8	7859-1106	1 3/8	4.24
2012.3/4	7858-2512	3/4	1.15	2525 1.7/16	7859-1107	1 7/16	4.17
2012.13/16	7858-2513	13/16	1.53	2525 1.1/2	7859-1108	1 1/2	4.03
2012.7/8	7858-2514	7/8	1.51	2525 1.5/8	7859-1110	1 5/8	3.85
2012.15/16	7858-2515	15/16	1.47	2525 1.11/16	7859-1111	1 11/16	3.78
2012 1.	7858-2600	1	1.46	2525 1.3/4	7859-1112	1 3/4	3.65
2012 1.1/16	7858-2601	1 1/16	1.43	2525 1.13/16	7859-1113	1 13/16	3.20
2012 1.1/8	7858-2602	1 1/8	1.39	2525 1.7/8	7859-1114	1 7/8	3.39
2012 1.3/16	7858-2603	1 3/16	1.36	2525 1.15/16	7859-1115	1 15/16	3.28
2012 1.1/4	7858-2604	1 1/4	1.33	2525 2.	7859-1200	2	3.17
2012 1.5/16	7858-2605	1 5/16	1.27	2525 2.1/8	7859-1202	2 1/8	2.89
2012 1.3/8	7858-2606	1 3/8	1.25	2525 2.3/16	7859-1203	2 3/16	2.50
2012 1.7/16	7858-2607	1 7/16	1.20	2525 2.1/4	7859-1204	2 1/4	2.40
2012 1.1/2	7858-2608	1 1/2	1.15	<sup>12</sup> 2525 2.5/16	7859-1205	2 5/16	2.73
2012 1.9/16	7858-2609	1 9/16	1.10	2525 2.3/8	7859-1206	2 3/8	2.33
2012 1.5/8	7858-2610	1 5/8	1.05	2525 2.7/16	7859-1207	2 7/16	2.36
2012 1.11/16	7858-2611	1 11/16	1.02	<sup>12</sup> 2525 2.1/2	7859-1208	2 1/2	2.19
2012 1.3/4	7858-2612	1 3/4	.95	3020.7/8	7859-6014	7/8	6.21
2012 1.13/16	7858-2613	1 13/16	.88	3020.15/16	7859-6015	15/16	6.10
2012 1.7/8	7858-2614	1 7/8	.83	3020 1.	7859-6100	1	6.08
<sup>12</sup> 2012 1.15/16	7858-2615	1 15/16	.86	3020 1.1/8	7859-6102	1 1/8	5.93
<sup>12</sup> 2012 2.	7858-2700	2	.80	3020 1.3/16	7859-6103	1 3/16	5.95
<sup>12</sup> 2012 2.1/8	7858-2702	2 1/8	.77	3020 1.1/4	7859-6104	1 1/4	5.86
2517.1/2	7858-3008	1/2	3.44	3020 1.5/16	7859-6105	1 5/16	5.81
2517.9/16	7858-3009	9/16	3.60	3020 1.3/8	7859-6106	1 3/8	5.72
2517.5/8	7858-3010	5/8	3.37	3020 1.7/16	7859-6107	1 7/16	5.65
2517.11/16	7858-3011	11/16	3.35	3020 1.1/2	7859-6108	1 1/2	5.60
2517.3/4	7858-3012	3/4	3.33	3020 1.9/16	7859-6109	1 9/16	5.90
2517.13/16	7858-3013	13/16	3.34	3020 1.5/8	7859-6110	1 5/8	5.47
2517.7/8	7858-3014	7/8	3.52	3020 1.11/16	7859-6111	1 11/16	5.36
2517.15/16	7858-3015	15/16	3.26	3020 1.3/4	7859-6112	1 3/4	5.28
2517 1.	7858-3100	1	3.18	3020 1.13/16	7859-6113	1 13/16	5.53
2517 1.1/16	7858-3101	1 1/16	3.18	3020 1.7/8	7859-6114	1 7/8	5.11
2517 1.1/8	7858-3102	1 1/8	3.09	3020 1.15/16	7859-6115	1 15/16	5.01
2517 1.3/16	7858-3103	1 3/16	3.06	3020 2.	7859-6200	2	4.92
2517 1.1/4	7858-3104	1 1/4	3.00	3020 2.1/16	7859-6201	2 1/16	4.81
2517 1.5/16	7858-3105	1 5/16	2.93	3020 2.1/8	7859-6202	2 1/8	4.72
2517 1.3/8	7858-3106	1 3/8	2.89	3020 2.3/16	7859-6203	2 3/16	4.63
2517 1.7/16	7858-3107	1 7/16	2.83	3020 2.1/4	7859-6204	2 1/4	4.50
2517 1.1/2	7858-3108	1 1/2	2.78	3020 2.5/16	7859-6205	2 5/16	4.37
2517 1.9/16	7858-3109	1 9/16	2.70	3020 2.3/8	7859-6206	2 3/8	4.28
2517 1.5/8	7858-3110	1 5/8	2.65	3020 2.7/16	7859-6207	2 7/16	4.16
2517 1.11/16	7858-3111	1 11/16	2.57	3020 2.1/2	7859-6208	2 1/2	4.05
2517 1.3/4	7858-3112	1 3/4	2.52	3020 2.5/8	7859-6210	2 5/8	3.78
2517 1.13/16	7858-3113	1 13/16	2.41	3020 2.11/16	7859-6211	2 11/16	3.67
2517 1.7/8	7858-3114	1 7/8	2.34	3020 2.3/4	7859-6212	2 3/4	3.62
2517 1.15/16	7858-3115	1 15/16	2.27	<sup>12</sup> 3020 2.13/16	7859-6213	2 13/16	3.66
2517 2.	7858-3200	2	2.16	<sup>12</sup> 3020 2.7/8	7859-6214	2 7/8	3.54
2517 2.1/16	7858-3201	2 1/16	2.10	<sup>12</sup> 3020 2.15/16	7859-6215	2 15/16	3.43
2517 2.1/8	7858-3202	2 1/8	2.02	<sup>12</sup> 3020 3.	7859-6300	3	3.27
2517 2.3/16	7858-3203	2 3/16	1.94	<sup>12</sup> 3020 3.1/8	7859-6302	3 1/8	3.35
2517 2.1/4	7858-3204	2 1/4	1.82	<sup>12</sup> 3020 3.3/16	7859-6303	3 3/16	3.13
<sup>12</sup> 2517 2.5/16	7858-3205	2 5/16	1.89	<sup>12</sup> 3020 3.1/4	7859-6304	3 1/4	2.96

<sup>12</sup> Shallow keyway.



**Taper-Lock® Bushings - English Sizes****Product No. Series 7848, 7858 & 7859 (continued)**

Part No.	Product No.	Bore (In.)	Wt. Ea. (Lbs.)	Part No.	Product No.	Bore (In.)	Wt. Ea. (Lbs.)
3030.15/16	7859-2015	15/16	9.36	3525 3.1/16	7858-5301	3 1/16	9.40
3030 1.	7859-2100	1	9.36	3525 3.1/8	7858-5302	3 1/8	9.30
3030 1.1/8	7859-2102	1 1/8	9.20	3525 3.3/16	7858-5303	3 3/16	8.60
3030 1.3/16	7859-2103	1 3/16	9.14	3525 3.1/4	7858-5304	3 1/4	8.80
3030 1.1/4	7859-2104	1 1/4	9.08	<sup>12</sup> 3525 3.5/16	7858-5305	3 5/16	8.70
3030 1.5/16	7859-2105	1 5/16	8.98	<sup>12</sup> 3525 3.3/8	7858-5306	3 3/8	8.50
3030 1.3/8	7859-2106	1 3/8	8.75	<sup>12</sup> 3525 3.7/16	7858-5307	3 7/16	8.20
3030 1.7/16	7859-2107	1 7/16	8.75	<sup>12</sup> 3525 3.1/2	7858-5308	3 1/2	8.00
3030 1.1/2	7859-2108	1 1/2	8.59	<sup>12</sup> 3525 3.9/16	7858-5309	3 9/16	8.00
3030 1.9/16	7859-2109	1 9/16	8.47	<sup>12</sup> 3525 3.5/8	7858-5310	3 5/8	7.90
3030 1.5/8	7859-2110	1 5/8	8.28	<sup>12</sup> 3525 3.11/16	7858-5311	3 11/16	7.90
3030 1.11/16	7859-2111	1 11/16	8.17	<sup>12</sup> 3525 3.3/4	7858-5312	3 3/4	7.90
3030 1.3/4	7859-2112	1 3/4	8.03	<sup>12</sup> 3525 3.13/16	7858-5313	3 13/16	7.90
3030 1.13/16	7859-2113	1 13/16	8.00	<sup>12</sup> 3525 3.7/8	7858-5314	3 7/8	7.90
3030 1.7/8	7859-2114	1 7/8	7.71	<sup>12</sup> 3525 3.15/16	7858-5315	3 15/16	7.90
3030 1.15/16	7859-2115	1 15/16	7.58	3535 1.3/16	7859-3103	1 3/16	15.08
3030 2.	7859-2200	2	7.39	3535 1.1/4	7859-3104	1 1/4	14.86
3030 2.1/16	7859-2201	2 1/16	7.39	3535 1.3/8	7859-3106	1 3/8	14.76
3030 2.1/8	7859-2202	2 1/8	7.11	3535 1.7/16	7859-3107	1 7/16	14.58
3030 2.3/16	7859-2203	2 3/16	6.97	3535 1.1/2	7859-3108	1 1/2	14.40
3030 2.1/4	7859-2204	2 1/4	6.77	3535 1.5/8	7859-3110	1 5/8	14.10
3030 2.5/16	7859-2205	2 5/16	6.57	3535 1.11/16	7859-3111	1 11/16	14.05
3030 2.3/8	7859-2206	2 3/8	6.39	3535 1.3/4	7859-3112	1 3/4	13.75
3030 2.7/16	7859-2207	2 7/16	6.26	3535 1.7/8	7859-3114	1 7/8	13.20
3030 2.1/2	7859-2208	2 1/2	6.08	3535 1.15/16	7859-3115	1 15/16	13.16
3030 2.5/8	7859-2210	2 5/8	5.66	3535 2.	7859-3200	2	13.11
3030 2.11/16	7859-2211	2 11/16	5.50	3535 2.1/8	7859-3202	2 1/8	12.75
3030 2.3/4	7859-2212	2 3/4	5.28	3535 2.3/16	7859-3203	2 3/16	12.59
<sup>12</sup> 3030 2.7/8	7859-2214	2 7/8	5.26	3535 2.1/4	7859-3204	2 1/4	12.40
<sup>12</sup> 3030 2.15/16	7859-2215	2 15/16	4.99	3535 2.3/8	7859-3206	2 3/8	12.00
<sup>12</sup> 3030 3.	7859-2300	3	4.78	3535 2.7/16	7859-3207	2 7/16	11.69
<sup>12</sup> 3030 3.1/8	7859-2302	3 1/8	4.69	3535 2.1/2	7859-3208	2 1/2	11.51
<sup>12</sup> 3030 3.3/16	7859-2303	3 3/16	4.80	3535 2.5/8	7859-3210	2 5/8	11.02
<sup>12</sup> 3030 3.1/4	7859-2304	3 1/4	4.80	3535 2.11/16	7859-3211	2 11/16	10.79
3525 1.3/16	7858-5103	1 3/16	16.00	3535 2.3/4	7859-3212	2 3/4	10.58
3525 1.1/4	7858-5104	1 1/4	14.60	3535 2.7/8	7859-3214	2 7/8	10.02
3525 1.5/16	7858-5105	1 5/16	14.60	3535 2.15/16	7859-3215	2 15/16	9.75
3525 1.3/8	7858-5106	1 3/8	14.30	3535 3.	7859-3300	3	9.50
3525 1.7/16	7858-5107	1 7/16	14.10	3535 3.1/8	7859-3302	3 1/8	8.94
3525 1.1/2	7858-5108	1 1/2	14.00	3535 3.3/16	7859-3303	3 3/16	8.66
3525 1.9/16	7858-5109	1 9/16	14.00	3535 3.1/4	7859-3304	3 1/4	8.30
3525 1.5/8	7858-5110	1 5/8	13.90	<sup>12</sup> 3535 3.5/16	7859-3305	3 5/16	8.70
3525 1.11/16	7858-5111	1 11/16	13.90	<sup>12</sup> 3535 3.3/8	7859-3306	3 3/8	8.44
3525 1.3/4	7858-5112	1 3/4	13.40	<sup>12</sup> 3535 3.7/16	7859-3307	3 7/16	8.13
3525 1.13/16	7858-5113	1 13/16	13.30	<sup>12</sup> 3535 3.1/2	7859-3308	3 1/2	7.90
3525 1.7/8	7858-5114	1 7/8	13.20	<sup>12</sup> 3535 3.5/8	7859-3310	3 5/8	7.09
3525 1.15/16	7858-5115	1 15/16	13.00	<sup>12</sup> 3535 3.11/16	7859-3311	3 11/16	6.79
3525 2.	7858-5200	2	13.00	<sup>12</sup> 3535 3.3/4	7859-3312	3 3/4	6.41
3525 2.1/16	7858-5201	2 1/16	12.90	<sup>12</sup> 3535 3.7/8	7859-3314	3 7/8	5.94
3525 2.1/8	7858-5202	2 1/8	12.60	<sup>12</sup> 3535 3.15/16	7859-3315	3 15/16	5.58
3525 2.3/16	7858-5203	2 3/16	12.40	4030 1.7/16	7858-6107	1 7/16	24.00
3525 2.1/4	7858-5204	2 1/4	12.30	4030 1.1/2	7858-6108	1 1/2	22.00
3525 2.5/16	7858-5205	2 5/16	11.80	4030 1.9/16	7858-6109	1 9/16	21.90
3525 2.3/8	7858-5206	2 3/8	12.00	4030 1.5/8	7858-6110	1 5/8	21.80
3525 2.7/16	7858-5207	2 7/16	11.70	4030 1.11/16	7858-6111	1 11/16	21.50
3525 2.1/2	7858-5208	2 1/2	11.50	4030 1.3/4	7858-6112	1 3/4	21.20
3525 2.9/16	7858-5209	2 9/16	11.40	4030 1.13/16	7858-6113	1 13/16	21.00
3525 2.5/8	7858-5210	2 5/8	11.10	4030 1.7/8	7858-6114	1 7/8	20.90
3525 2.11/16	7858-5211	2 11/16	10.70	4030 1.15/16	7858-6115	1 15/16	20.70
3525 2.3/4	7858-5212	2 3/4	10.40	4030 2.	7858-6200	2	20.60
3525 2.13/16	7858-5213	2 13/16	10.30	4030 2.1/16	7858-6201	2 1/16	20.60
3525 2.7/8	7858-5214	2 7/8	10.10	4030 2.1/8	7858-6202	2 1/8	20.70
3525 2.15/16	7858-5215	2 15/16	10.50	4030 2.3/16	7858-6203	2 3/16	20.40
3525 3.	7858-5300	3	9.50	4030 2.1/4	7858-6204	2 1/4	20.10

<sup>12</sup> Shallow keyway.



# Taper-Lock® Bushings - English Sizes

## Product No. Series 7848, 7858 & 7859 (continued)

Part No.	Product No.	Bore (In.)	Wt. Ea. (Lbs.)	Part No.	Product No.	Bore (In.)	Wt. Ea. (Lbs.)
4030 2.5/16	7858-6205	2 5/16	20.00	<sup>12</sup> 4040 4.	7859-4400	4	12.05
4030 2.3/8	7858-6206	2 3/8	19.50	<sup>12</sup> 4040 4.1/8	7859-4402	4 1/8	11.22
4030 2.7/16	7858-6207	2 7/16	19.30	<sup>12</sup> 4040 4.3/16	7859-4403	4 3/16	10.70
4030 2.1/2	7858-6208	2 1/2	19.20	<sup>12</sup> 4040 4.3/8	7859-4406	4 3/8	9.52
4030 2.9/16	7858-6209	2 9/16	19.10	<sup>12</sup> 4040 4.7/16	7859-4407	4 7/16	8.88
4030 2.5/8	7858-6210	2 5/8	19.00	4535 1.15/16	7858-7115	1 15/16	31.00
4030 2.11/16	7858-6211	2 11/16	18.40	4535 2.	7858-7200	2	29.70
4030 2.3/4	7858-6212	2 3/4	17.70	4535 2.1/16	7858-7201	2 1/16	23.65
4030 2.13/16	7858-6213	2 13/16	17.50	4535 2.1/8	7858-7202	2 1/8	29.30
4030 2.7/8	7858-6214	2 7/8	17.20	4535 2.3/16	7858-7203	2 3/16	29.00
4030 2.15/16	7858-6215	2 15/16	17.20	4535 2.1/4	7858-7204	2 1/4	23.15
4030 3.	7858-6300	3	17.00	4535 2.5/16	7858-7205	2 5/16	28.60
4030 3.1/16	7858-6301	3 1/16	16.80	4535 2.3/8	7858-7206	2 3/8	28.40
4030 3.1/8	7858-6302	3 1/8	16.50	4535 2.7/16	7858-7207	2 7/16	28.00
4030 3.3/16	7858-6303	3 3/16	15.90	4535 2.1/2	7858-7208	2 1/2	26.70
4030 3.1/4	7858-6304	3 1/4	15.40	4535 2.9/16	7858-7209	2 9/16	26.40
4030 3.5/16	7858-6305	3 5/16	14.90	4535 2.5/8	7858-7210	2 5/8	25.90
4030 3.3/8	7858-6306	3 3/8	14.60	4535 2.11/16	7858-7211	2 11/16	25.40
4030 3.7/16	7858-6307	3 7/16	14.10	4535 2.3/4	7858-7212	2 3/4	25.00
4030 3.1/2	7858-6308	3 1/2	13.40	4535 2.13/16	7858-7213	2 13/16	24.90
4030 3.9/16	7858-6309	3 9/16	10.85	4535 2.7/8	7858-7214	2 7/8	24.80
4030 3.5/8	7858-6310	3 5/8	14.00	4535 2.15/16	7858-7215	2 15/16	24.10
4030 3.11/16	7858-6311	3 11/16	13.00	4535 3.	7858-7300	3	24.20
4030 3.3/4	7858-6312	3 3/4	12.70	4535 3.1/16	7858-7301	3 1/16	24.20
4030 3.13/16	7858-6313	3 3/16	9.65	4535 3.1/8	7858-7302	3 1/8	24.10
4030 3.7/8	7858-6314	3 7/8	12.90	4535 3.3/16	7858-7303	3 3/16	23.80
4030 3.15/16	7858-6315	3 15/16	12.60	4535 3.1/4	7858-7304	3 1/4	23.10
4030 4.	7858-6400	4	12.60	4535 3.5/16	7858-7305	3 5/16	22.70
4030 4.1/8	7858-6402	4 1/8	12.60	4535 3.3/8	7858-7306	3 3/8	22.40
4030 4.3/16	7858-6403	4 3/16	12.60	4535 3.7/16	7858-7307	3 7/16	21.50
4030 4.1/4	7858-6404	4 1/4	12.60	4535 3.1/2	7858-7308	3 1/2	21.30
4030 4.3/8	7858-6406	4 3/8	12.60	4535 3.9/16	7858-7309	3 9/16	21.10
4030 4.7/16	7858-6407	4 7/16	11.80	4535 3.5/8	7858-7310	3 5/8	21.00
4040 1.7/16	7859-4107	1 7/16	24.00	4535 3.11/16	7858-7311	3 11/16	20.30
4040 1.1/2	7859-4108	1 1/2	22.00	4535 3.3/4	7858-7312	3 3/4	19.90
4040 1.5/8	7859-4110	1 5/8	22.13	4535 3.13/16	7858-7313	3 13/16	19.60
4040 1.11/16	7859-4111	1 11/16	21.80	4535 3.7/8	7858-7314	3 7/8	19.30
4040 1.3/4	7859-4112	1 3/4	21.97	4535 3.15/16	7858-7315	3 15/16	18.90
4040 1.7/8	7859-4114	1 7/8	21.00	4535 4.	7858-7400	4	18.70
4040 1.15/16	7859-4115	1 15/16	21.18	4535 4.1/8	7858-7402	4 1/8	18.60
4040 2.	7859-4200	2	21.11	4535 4.3/16	7858-7403	4 3/16	18.50
4040 2.1/8	7859-4202	2 1/8	20.59	4535 4.1/4	7858-7404	4 1/4	17.80
4040 2.3/16	7859-4203	2 3/16	20.32	4535 4.3/8	7858-7406	4 3/8	16.80
4040 2.1/4	7859-4204	2 1/4	20.19	4535 4.7/16	7858-7407	4 7/16	15.40
4040 2.3/8	7859-4206	2 3/8	19.64	4535 4.1/2	7858-7408	4 1/2	15.30
4040 2.7/16	7859-4207	2 7/16	19.30	<sup>12</sup> 4535 4.3/4	7858-7412	4 3/4	15.20
4040 2.1/2	7859-4208	2 1/2	18.80	<sup>12</sup> 4535 4.7/8	7858-7414	4 7/8	15.10
4040 2.5/8	7859-4210	2 5/8	18.65	<sup>12</sup> 4535 4.15/16	7858-7415	4 15/16	14.90
4040 2.11/16	7859-4211	2 11/16	18.33	4545 1.15/16	7859-5115	1 15/16	29.85
4040 2.3/4	7859-4212	2 3/4	18.21	4545 2.	7859-5200	2	29.76
4040 2.7/8	7859-4214	2 7/8	17.41	4545 2.3/16	7859-5203	2 3/16	29.06
4040 2.15/16	7859-4215	2 15/16	17.08	4545 2.3/8	7859-5206	2 3/8	28.16
4040 3.	7859-4300	3	16.79	4545 2.7/16	7859-5207	2 7/16	27.90
4040 3.1/8	7859-4302	3 1/8	16.17	4545 2.5/8	7859-5210	2 5/8	27.03
4040 3.3/16	7859-4303	3 3/16	15.82	4545 2.3/4	7859-5212	2 3/4	26.48
4040 3.1/4	7859-4304	3 1/4	15.52	4545 2.7/8	7859-5214	2 7/8	25.71
4040 3.3/8	7859-4306	3 3/8	14.70	4545 2.15/16	7859-5215	2 15/16	25.41
4040 3.7/16	7859-4307	3 7/16	14.42	4545 3.	7859-5300	3	25.15
4040 3.1/2	7859-4308	3 1/2	14.03	4545 3.1/8	7859-5302	3 1/8	24.31
4040 3.5/8	7859-4310	3 5/8	13.37	4545 3.3/16	7859-5303	3 3/16	24.00
4040 3.11/16	7859-4311	3 11/16	13.87	4545 3.1/4	7859-5304	3 1/4	23.83
4040 3.3/4	7859-4312	3 3/4	13.45	4545 3.3/8	7859-5306	3 3/8	22.80
<sup>12</sup> 4040 3.7/8	7859-4314	3 7/8	12.90	4545 3.7/16	7859-5307	3 7/16	22.31
<sup>12</sup> 4040 3.15/16	7859-4315	3 15/16	12.46	4545 3.1/2	7859-5308	3 1/2	22.10

<sup>12</sup> Shallow keyway.



**Taper-Lock® Bushings - English Sizes****Product No. Series 7848, 7858 & 7859 (continued)**

Part No.	Product No.	Bore (In.)	Wt. Ea. (Lbs.)	Part No.	Product No.	Bore (In.)	Wt. Ea. (Lbs.)
4545 3.5/8	7859-5310	3 5/8	21.22	5050 2.7/16	7859-7207	2 7/16	38.71
4545 3.3/4	7859-5312	3 3/4	20.31	5050 2.11/16	7859-7211	2 11/16	37.42
4545 3.7/8	7859-5314	3 7/8	19.34	5050 2.15/16	7859-7215	2 15/16	35.97
4545 3.15/16	7859-5315	3 15/16	18.96	5050 3.3/8	7859-7306	3 3/8	33.01
4545 4.	7859-5400	4	18.61	5050 3.7/16	7859-7307	3 7/16	32.60
4545 4.1/8	7859-5402	4 1/8	17.52	5050 3.5/8	7859-7310	3 5/8	31.23
4545 4.3/16	7859-5403	4 3/16	17.14	5050 3.7/8	7859-7314	3 7/8	29.30
4545 4.1/4	7859-5404	4 1/4	14.89	5050 3.15/16	7859-7315	3 15/16	28.79
<sup>12</sup> 4545 4.3/8	7859-5406	4 3/8	16.94	5050 4.	7859-7400	4	28.30
<sup>12</sup> 4545 4.7/16	7859-5407	4 7/16	16.33	5050 4.1/4	7859-7404	4 1/4	24.02
<sup>12</sup> 4545 4.1/2	7859-5408	4 1/2	15.84	5050 4.3/8	7859-7406	4 3/8	25.08
<sup>12</sup> 4545 4.3/4	7859-5412	4 3/4	13.92	5050 4.7/16	7859-7407	4 7/16	24.40
<sup>12</sup> 4545 4.7/8	7859-5414	4 7/8	12.85	5050 4.1/2	7859-7408	4 1/2	23.89
<sup>12</sup> 4545 4.15/16	7859-5415	4 15/16	12.27	<sup>12</sup> 5050 4.7/8	7859-7414	4 7/8	22.25
5040 2.7/16	7858-8207	2 7/16	39.50	<sup>12</sup> 5050 4.15/16	7859-7415	4 15/16	21.67
5040 2.1/2	7858-8208	2 1/2	38.30	<sup>12</sup> 5050 5.	7859-7500	5	20.94
5040 2.9/16	7858-8209	2 9/16	37.70	6050 3.	7859-8300	3	65.00
5040 2.5/8	7858-8210	2 5/8	37.10	6050 3.1/4	7859-8304	3 1/4	65.00
5040 2.11/16	7858-8211	2 11/16	36.90	6050 3.7/16	7859-8307	3 7/16	65.00
5040 2.3/4	7858-8212	2 3/4	36.60	6050 4.	7859-8400	4	65.00
5040 2.13/16	7858-8213	2 13/16	36.50	6050 4.7/16	7859-8407	4 7/16	64.20
5040 2.7/8	7858-8214	2 7/8	36.40	6050 4.15/16	7859-8415	4 15/16	58.24
5040 2.15/16	7858-8215	2 15/16	36.20	6050 5.7/16	7859-8507	5 7/16	52.30
5040 3.	7858-8300	3	35.60	6050 5.15/16	7859-8515	5 15/16	47.24
5040 3.1/16	7858-8301	3 1/16	35.20	6050 6.	7859-8600	6	46.38
5040 3.1/8	7858-8302	3 1/8	34.80	7060 3.	7859-9300	3	95.00
5040 3.3/16	7858-8303	3 3/16	33.90	7060 3.1/4	7859-9304	3 1/4	95.00
5040 3.1/4	7858-8304	3 1/4	33.20	7060 3.7/16	7859-9307	3 7/16	95.00
5040 3.5/16	7858-8305	3 5/16	33.00	7060 4.15/16	7859-9415	4 15/16	91.95
5040 3.3/8	7858-8306	3 3/8	32.70	7060 5.7/16	7859-9507	5 7/16	84.48
5040 3.7/16	7858-8307	3 7/16	32.00	7060 5.15/16	7859-9515	5 15/16	78.16
5040 3.1/2	7858-8308	3 1/2	31.70	7060 6.	7859-9600	6	76.64
5040 3.9/16	7858-8309	3 9/16	31.40	7060 6.7/16	7859-9607	6 7/16	68.08
5040 3.5/8	7858-8310	3 5/8	31.10	7060 6.1/2	7859-9608	6 1/2	68.64
5040 3.11/16	7858-8311	3 11/16	30.40	7060 6.15/16	7859-9615	6 15/16	62.13
5040 3.3/4	7858-8312	3 3/4	29.70	7060 7.	7859-9700	7	60.64
5040 3.13/16	7858-8313	3 13/16	29.40	8065 5.7/16	7859-9517	5 7/16	97.65
5040 3.7/8	7858-8314	3 7/8	29.00	8065 5.15/16	7859-9525	5 15/16	105.70
5040 3.15/16	7858-8315	3 15/16	28.70	8065 6.7/16	7859-9617	6 7/16	102.30
5040 4.	7858-8400	4	27.80	8065 6.1/2	7859-9618	6 1/2	101.78
5040 4.1/8	7858-8402	4 1/8	27.50	8065 6.15/16	7859-9625	6 15/16	92.00
5040 4.3/16	7858-8403	4 3/16	27.20	8065 7.	7859-9710	7	91.10
5040 4.1/4	7858-8404	4 1/4	27.00	8065 7.1/2	7859-9718	7 1/2	89.00
5040 4.3/8	7858-8406	4 3/8	26.00	8065 8.	7859-9810	8	89.90
5040 4.7/16	7858-8407	4 7/16	25.10	10085 10.	7859-9020	10	157.50
5040 4.1/2	7858-8408	4 1/2	23.60	10085 7.	7859-9720	7	245.00
5040 4.3/4	7858-8412	4 3/4	22.90	10085 8.	7859-9820	8	219.00
5040 4.7/8	7858-8414	4 7/8	22.20	10085 9.	7859-9920	9	190.00
5040 4.15/16	7858-8415	4 15/16	20.60	120100 12.	7859-9120	12	290.00
5040 5.	7858-8500	5	20.50				



# Stainless Steel Taper-Lock® Bushings - English Sizes

## Markets/Applications

Stainless steel bushings are ideal for the food and beverage market or where non-corrosive sprockets are needed to prevent rust.

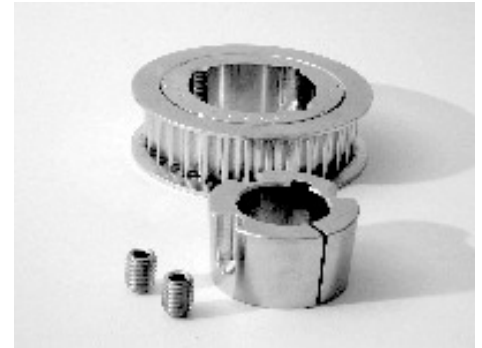
## Features/Advantages

- Bushings are made to precise tolerances.
- Popular bore sizes are available.
- Stainless steel bushings are corrosion resistant, preventing rust build up and increasing product life.

## Notes

SS is used to signify Stainless Steel.

Details shown which do not affect drive function or overall weight may be changed without notification.



## Product No. Series 7869

Part No.	Product No.	Bore (In.)	Wt. Ea. (Lbs.)
SS 1108 .1/2	7869-0001	1/2	.30
SS 1108 .9/16	7869-0002	9/16	.30
SS 1108 .5/8	7869-0003	5/8	.30
SS 1108 .11/16	7869-0004	11/16	.20
SS 1108 .3/4	7869-0005	3/4	.20
SS 1108 .13/16	7869-0006	13/16	.20
SS 1108 .7/8	7869-0007	7/8	.20
SS 1108 .15/16	7869-0008	15/16	.20
SS 1108 1.	7869-0009	1	.20
SS 1108 1.1/16	7869-0010	1 1/16	.20
SS 1108 1.1/8	7869-0011	1 1/8	.10
SS 1210 .1/2	7869-0101	1/2	.60
SS 1210 .9/16	7869-0102	9/16	.60
SS 1210 .5/8	7869-0103	5/8	.60
SS 1210 .11/16	7869-0104	11/16	.50
SS 1210 .3/4	7869-0105	3/4	.50
SS 1210 .13/16	7869-0106	13/16	.50
SS 1210 .7/8	7869-0107	7/8	.50
SS 1210 .15/16	7869-0108	15/16	.50
SS 1210 1.	7869-0109	1	.50
SS 1210 1.1/16	7869-0110	1 1/16	.40
SS 1210 1.1/8	7869-0111	1 1/8	.40
SS 1210 1.3/16	7869-0112	1 3/16	.40
SS 1210 1.1/4	7869-0113	1 1/4	.40
SS 1610 .1/2	7869-0201	1/2	.90
SS 1610 .9/16	7869-0202	9/16	.90
SS 1610 .5/8	7869-0203	5/8	.90
SS 1610 .11/16	7869-0204	11/16	.90
SS 1610 .3/4	7869-0205	3/4	.90
SS 1610 .13/16	7869-0206	13/16	.90
SS 1610 .7/8	7869-0207	7/8	.80
SS 1610 .15/16	7869-0208	15/16	.80
SS 1610 1.	7869-0209	1	.80
<sup>12</sup> SS 1610 1.1/16	7869-0210	1 1/16	.80
SS 1610 1.1/8	7869-0211	1 1/8	.70

Part No.	Product No.	Bore (In.)	Wt. Ea. (Lbs.)
SS 1610 1.3/16	7869-0212	1 3/16	.70
SS 1610 1.1/4	7869-0213	1 1/4	.70
SS 1610 1.5/16	7869-0214	1 5/16	.60
SS 1610 1.3/8	7869-0215	1 3/8	.60
SS 1610 1.7/16	7869-0216	1 7/16	.60
SS 1610 1.1/2	7869-0217	1 1/2	.50
SS 1610 1.9/16	7869-0218	1 9/16	.50
SS 1610 1.5/8	7869-0219	1 5/8	.50
<sup>12</sup> SS 1610 1.11/16	7869-0220	1 11/16	.50
SS 2012 .1/2	7869-0301	1/2	1.70
SS 2012 .9/16	7869-0302	9/16	1.70
SS 2012 .5/8	7869-0303	5/8	1.70
SS 2012 .11/16	7869-0304	11/16	1.70
SS 2012 .3/4	7869-0305	3/4	1.70
SS 2012 .13/16	7869-0306	13/16	1.75
SS 2012 .7/8	7869-0307	7/8	1.60
SS 2012 .15/16	7869-0308	15/16	1.60
SS 2012 1.	7869-0309	1	1.60
SS 2012 1.1/16	7869-0310	1 1/16	1.60
SS 2012 1.1/8	7869-0311	1 1/8	1.50
SS 2012 1.3/16	7869-0312	1 3/16	1.50
SS 2012 1.1/4	7869-0313	1 1/4	1.50
SS 2012 1.5/16	7869-0314	1 5/16	1.40
SS 2012 1.3/8	7869-0315	1 3/8	1.30
SS 2012 1.7/16	7869-0316	1 7/16	1.20
SS 2012 1.1/2	7869-0317	1 1/2	1.20
SS 2012 1.9/16	7869-0318	1 9/16	1.20
SS 2012 1.5/8	7869-0319	1 5/8	1.20
SS 2012 1.11/16	7869-0320	1 11/16	1.10
SS 2012 1.3/4	7869-0321	1 3/4	1.00
SS 2012 1.13/16	7869-0322	1 13/16	1.00
SS 2012 1.7/8	7869-0323	1 7/8	.90
SS 2012 1.15/16	7869-0324	1 15/16	.90
SS 2012 2.	7869-0325	2	.90
<sup>12</sup> SS 2012 2.1/8	7869-0326	2 1/8	.90

<sup>12</sup> Shallow keyway.





## Taper-Lock® Bushings - Metric Sizes

## Product No. Series 7848, 7858 &amp; 7859

Part No.	Product No.	Bore (mm)	Wt. Ea. (Lbs.)	Part No.	Product No.	Bore (mm)	Wt. Ea. (Lbs.)
1008 14MM	7858-0017	14	.25	2012 19MM	7858-2519	19	1.55
1008 16MM	7858-0016	16	.24	2012 20MM	7858-2520	20	1.55
1008 18MM	7858-0018	18	.22	2012 22MM	7858-2522	22	1.51
1008 19MM	7858-0019	19	.21	2012 24MM	7858-2524	24	1.45
1008 20MM	7858-0020	20	.20	2012 25MM	7858-2525	25	1.45
1008 22MM	7858-0022	22	.18	2012 28MM	7858-2528	28	1.40
<sup>12</sup> 1008 24MM	7858-0024	24	.16	2012 30MM	7858-2530	30	1.35
1108 16MM	7858-0116	16	.30	2012 32MM	7858-2532	32	1.30
1108 18MM	7858-0118	18	.28	2012 35MM	7858-2535	35	1.20
1108 19MM	7858-0119	19	.27	2012 38MM	7858-2538	38	1.15
1108 20MM	7858-0120	20	.25	2012 40MM	7858-2540	40	1.10
1108 22MM	7858-0122	22	.20	2012 42MM	7858-2542	42	1.03
1108 24MM	7858-0124	24	.21	2012 45MM	7858-2545	45	.90
1108 25MM	7858-0125	25	.20	2517 14MM	7858-3314	14	3.42
1210 14MM	7858-0517	14	.56	2517 16MM	7858-3316	16	3.42
1210 16MM	7858-0516	16	.54	2517 18MM	7858-3318	18	3.36
1210 18MM	7858-0518	18	.53	2517 20MM	7858-3300	20	3.25
1210 19MM	7858-0519	19	.51	2517 22MM	7858-3322	22	3.30
1210 20MM	7858-0520	20	.50	2517 24MM	7858-3301	24	3.21
1210 24MM	7858-0524	24	.45	2517 25MM	7858-3325	25	3.20
1210 25MM	7858-0525	25	.45	2517 28MM	7858-3328	28	3.12
1210 28MM	7858-0528	28	.40	2517 30MM	7858-3330	30	3.05
1210 30MM	7858-0530	30	.45	2517 32MM	7858-3332	32	3.00
1310 24MM	7848-4424	24	.54	2517 35MM	7858-3335	35	2.90
1310 25MM	7848-4425	25	.52	2517 38MM	7858-3338	38	2.80
1310 28MM	7848-4428	28	.48	2517 40MM	7858-3340	40	2.70
1310 30MM	7848-4430	30	.44	2517 42MM	7858-3342	42	2.60
1310 32MM	7848-4432	32	.40	2517 45MM	7858-3345	45	2.46
1310 35MM	7848-4435	35	.34	2517 48MM	7858-3348	48	2.32
1610 19MM	7858-1619	19	.80	2517 50MM	7858-3350	50	2.25
1610 20MM	7858-1620	20	.80	2517 55MM	7858-3355	55	1.95
1610 22MM	7858-1622	22	.75	2517 60MM	7858-3360	60	1.60
1610 24MM	7858-1624	24	.75	3020 24MM	7859-6524	24	6.11
1610 25MM	7858-1625	25	.70	3020 25MM	7859-6525	25	6.11
1610 28MM	7858-1628	28	.67	3020 28MM	7859-6528	28	5.98
1610 30MM	7858-1630	30	.65	3020 40MM	7859-6540	40	5.54
1610 32MM	7858-1632	32	.55	3020 45MM	7859-6545	45	5.25
1610 35MM	7858-1635	35	.55	3020 48MM	7859-6548	48	5.05
1610 38MM	7858-1638	38	.45	3020 50MM	7859-6550	50	5.00
1610 40MM	7858-1640	40	.45	3020 55MM	7859-6555	55	4.60
2012 14MM	7858-2517	14	1.62	3020 60MM	7859-6560	60	4.35
2012 16MM	7858-2516	16	1.60	3020 65MM	7859-6565	65	3.95
2012 18MM	7858-2518	18	1.57				



# Stainless Steel Taper-Lock® Bushings - Metric Sizes

## Markets/Applications

Stainless steel bushings are ideal for the food and beverage market or where non-corrosive sprockets are needed to prevent rust.

## Features/Advantages

- Bushings are made to precise tolerances.
- Popular bore sizes are available.
- Stainless steel bushings are corrosion resistant, preventing rust build up and increasing product life.

## Notes

SS is used to signify Stainless Steel (type 302-304).

Details shown which do not affect drive function or overall weight may be changed without notification.



## Product No. Series 7869

Part No.	Product No.	Bore (mm)	Key Way Size (mm)	Wt. Ea. (Lbs.)
SS 1008 20MM	7869-0801	20	Kwy Width: 6mm / hub keyseat: 2.8mm	.20
SS 1008 24MM	7869-0802	24		.16
SS 1108 16MM	7869-0401	16	5 X 2.3	.30
SS 1108 19MM	7869-0402	19	6 X 2.8	.27
SS 1108 20MM	7869-0403	20	6 X 2.8	.26
SS 1108 22MM	7869-0404	22	6 X 2.8	.24
SS 1108 24MM	7869-0405	24	8 X 3.3	.21
SS 1108 25MM	7869-0406	25	8 X 3.3	.19
SS 1210 16MM	7869-0501	16	5 X 2.3	.54
SS 1210 20MM	7869-0502	20	6 X 2.8	.50
SS 1210 24MM	7869-0503	24	8 X 3.3	.45
SS 1210 25MM	7869-0504	25	8 X 3.3	.43
SS 1210 28MM	7869-0505	28	8 X 3.3	.39
SS 1210 30MM	7869-0506	30	8 X 3.3	.35
SS 1610 20MM	7869-0601	20	6 X 2.8	.78
SS 1610 24MM	7869-0602	24	8 X 3.3	.73

Part No.	Product No.	Bore (mm)	Key Way Size (mm)	Wt. Ea. (Lbs.)
SS 1610 25MM	7869-0603	25	8 X 3.3	.71
SS 1610 28MM	7869-0604	28	8 X 3.3	.67
SS 1610 30MM	7869-0605	30	8 X 3.3	.64
SS 1610 32MM	7869-0606	32	10 X 3.3	.60
SS 1610 35MM	7869-0607	35	10 X 3.3	.54
SS 1610 38MM	7869-0608	38	10 X 3.3	.47
SS 2012 20MM	7869-0701	20	6 X 2.8	1.54
SS 2012 22MM	7869-0702	22	6 X 2.8	1.51
SS 2012 24MM	7869-0703	24	8 X 3.3	1.47
SS 2012 25MM	7869-0704	25	8 X 3.3	1.45
SS 2012 28MM	7869-0705	28	8 X 3.3	1.35
SS 2012 30MM	7869-0706	30	8 X 3.3	1.35
SS 2012 32MM	7869-0707	32	10 X 3.3	1.30
SS 2012 35MM	7869-0708	35	10 X 3.3	1.23
SS 2012 38MM	7869-0709	38	10 X 3.3	1.16
SS 2012 40MM	7869-0710	40	12 X 3.3	1.07
SS 2012 42MM	7869-0711	42	12 X 3.3	1.03
SS 2012 45MM	7869-0712	45	14 X 3.8	.94



# Taper-Lock® Bushings - Reborable

## Markets/Applications

For use with all Taper-Lock style sheaves, sprockets and pulleys.

## Features/Advantages

- Bushings are made to precise tolerances.

### Notes

Available in minimum plain bore (MPB).

Contact Customer Service for ordering instructions.

NKS and NK mean No Keyseat.

Reborable bushings are stocked without sawsplit to facilitate re-machining. Sawsplit must be made in bushing to allow it to compress for proper gripping of the shaft.

Details shown which do not affect drive function or overall weight may be changed without notification.



## Product No. Series 7847

### Sintered Steel Reborable Bushing

Part No.	Product No.	Bore (In.)	Wt. Ea. (Lbs.)
1108.1/2NKS	7847-2101	1/2	.35
1210.1/2NKS	7847-2102	1/2	.60
1215.1/2NKS	7847-2103	1/2	.85
1610.1/2NKS	7847-2105	1/2	.88
2012.1/2NKS	7847-2107	1/2	1.65
2517.1/2NKS	7847-2108	1/2	3.50
3020.1.11/16NKS	7847-2110	1 11/16	5.48
3020.7/8NKS	7847-2109	7/8	6.15

### Steel Reborable Bushing

Part No.	Product No.	Bore (In.)	Wt. Ea. (Lbs.)
1108.1/2STL-NK	7847-4101	1/2	.38
1610.1/2STL-NK	7847-4105	1/2	1.01
1615.1/2STL-NK	7847-4106	1/2	1.46
2012.1/2STL-NK	7847-4107	1/2	1.93
2517.1.STL-NK	7847-4108	1	3.80
3020.1.7/16STL-NK	7847-4110	1 7/16	6.60

### Cast Iron Reborable Bushing

Part No.	Product No.	Bore (In.)	Wt. Ea. (Lbs.)
3525.1.3/16NKS	7847-3112	1 3/16	14.50
3535.13/16NKS	7847-3101	1 3/16	14.97
4030.1.7/16NKS	7847-3113	1 7/16	28.40
4040.1.7/16NKS	7847-3102	1 7/16	22.89
4535.1.15/16NKS	7847-3110	1 15/16	30.30
4545.1.15/16NKS	7847-3103	1 15/16	30.22
5040.2.7/16NKS	7847-3111	2 7/16	33.00
6050.3.7/16NKS	7847-3105	3 7/16	71.92
7060.3.15/16NKS	7847-3106	3 15/16	96.00

### Ductile Iron Reborable Bushing

Part No.	Product No.	Bore (In.)	Wt. Ea. (Lbs.)
3525.1.3/16DUC-NK	7847-5112	1 3/16	14.50
4030.1.15/16DUC-NK	7847-5113	1 7/16	28.40
4040.1.15/16DUC-NK	7847-5101	1 15/16	20.69
4535.2.7/16DUC-NK	7847-5110	2 7/16	28.40
4545.2.7/16DUC-NK	7847-5102	2 7/16	27.88
5040.2.15/16DUC-NK	7847-5111	2 15/16	29.45
6050.3.7/16DUC-NK	7847-5104	3 7/16	64.20

### Stainless Steel Reborable Bushing

Part No.	Product No.	Bore (In.)	Wt. Ea. (Lbs.)
1108.1/2SS-NK	7847-6101	1/2	.40
1210.1/2SS-NK	7847-6102	1/2	.68
1610.1/2SS-NK	7847-6105	1/2	1.01
2012.1/2SS-NK	7847-6107	1/2	2.00
2517.5/8SS-NK	7847-6108	5/8	3.97
3020.7/8SS-NK	7847-6109	7/8	7.22

## H-Type Bushings

### Markets/Applications

Use with cast iron light-duty (FHP) taper bushed sheaves & PowerGrip® HTD® Sprockets.

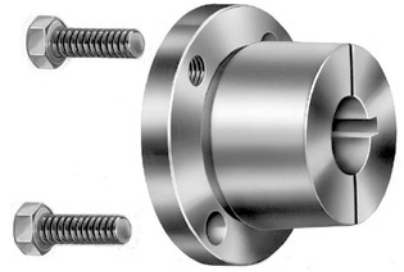
### Features/Advantages

- Bushings are made to precise tolerances.
- Available in popular bore sizes.

### Notes

Stock bore sizes from 1 1/4" through 1 1/2" are furnished with special keys to fit standard depth keyseats.

Details shown which do not affect drive function or overall weight may be changed without notification.



### Product No. Series 7812

Part No.	Product No.	Bore (In.)	Keyseat	Wt. Ea. (Lbs.)
◦ H.7/16	7812-0002	7/16	—	.90
◦ H.9/16	7812-0004	9/16	1/8 X 1/16	.80
◦ H.11/16	7812-0006	11/16	3/16 X 3/32	.76
◦ H.13/16	7812-0008	13/16	3/16 X 3/32	.75
◦ H 1.5/16	7812-0016	1 5/16	5/16 X 1/16	.50
◦ H 1.1/2	7812-0019	1 1/2	3/8 X 1/16	.35
◦ H 14MM	7812-1014	14MM	—	.79
◦ H 19MM	7812-1019	19MM	—	.80
◦ H 24MM	7812-1032	24MM	—	.70
◦ H 25MM	7812-1033	25MM	—	.65
◦ H 28MM	7812-1035	28MM	—	.60
◦ H 30MM	7812-1036	30MM	—	.53

◦ Available Until Stock Depleted.



Powering Progress.

gates.com/pt

257



## QT-Type Bushings

### Markets/Applications

Use with cast iron light-duty FHP taper bushed sheaves & PowerGrip® HTD® Sprockets.

### Features/Advantages

- Available in popular bore sizes.
- Bushings are made to precise tolerances.

### Notes

English stock bore sizes greater than 1 1/4" are furnished with special keys to fit standard depth keyseats. Metric stock bore sizes greater than 30mm are furnished with special keys to fit standard depth keyseats.

Details shown which do not affect drive function or overall weight may be changed without notification.

### Product No. Series 7817

Part No.	Product No.	Bore (In.)	Keyseat	Wt. Ea. (Lbs.)
QT .1/2	7817-0003	1/2	1/8 X 1/16	.60
QT .9/16	7817-0004	9/16	1/8 X 1/16	.60
QT .5/8	7817-0005	5/8	3/16 X 3/32	.60
QT .11/16	7817-0006	11/16	3/16 X 3/32	.60
QT .3/4	7817-0007	3/4	3/16 X 3/32	.60
QT .13/16	7817-0008	13/16	3/16 X 3/32	.60
QT .7/8	7817-0009	7/8	3/16 X 3/32	.60
QT .15/16	7817-0010	15/16	1/4 X 1/8	.60
QT 1.	7817-0011	1	1/4 X 1/8	.60
QT 1.1/16	7817-0012	1 1/16	1/4 X 1/8	.60
QT 1.1/8	7817-0013	1 1/8	1/4 X 1/8	.60
QT 1.3/16	7817-0014	1 3/16	1/4 X 1/8	.60
QT 1.1/4	7817-0015	1 1/4	1/4 X 1/8	.60
QT 1.5/16	7817-0016	1 5/16	5/16 X 1/16	.60
QT 1.3/8	7817-0017	1 3/8	5/16 X 1/16	.60
QT 1.7/16	7817-0018	1 7/16	3/8 X 1/16	.60
QT 1.1/2	7817-0019	1 1/2	3/8 X 1/16	.60
QT 14MM	7817-1014	14MM	—	.60
QT 19MM	7817-1019	19MM	—	.60
QT 24MM	7817-1032	24MM	—	.60
QT 25MM	7817-1033	25MM	—	.60
QT 28MM	7817-1035	28MM	—	.60
QT 30MM	7817-1036	30MM	—	.60
QT 32MM	7817-1037	32MM	—	.60

