



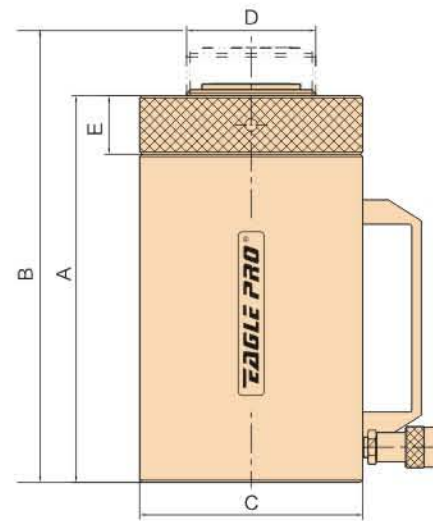
ELA-1006



Lock nut feature permits mechanical load holding

ELA-SERIES SINGLE ACTING ALUMINIUM LOCK NUT CYLINDER

- ◆ Safety lock nut for mechanical load holding.
- ◆ Low weight and good portability.
- ◆ High flow EAB-201 quick coupler.
- ◆ Overflow port functions as a stroke limiter.
- ◆ Spring return .
- ◆ Features carrying handle.



Cylinder Capacity @ 700 Bar (10,000 PSI)	Stroke	Model	Cylinder Effective Area	Oil Capacity	Collapsed Height	Extended Height	Outside Diameter	Piston Rod Diam.	Nut Thickness	Weight
Metric Ton (US Ton)	in		in ²	in ³	A	B	C	D	E	lbs
50	6.00	ELA-556	10.99	67.07	12.50	18.60	5.27	Tr80X4	1.57	26.4
100	6.00	ELA-1006	20.58	128.39	13.37	19.60	7.44	Tr110X6	1.97	66

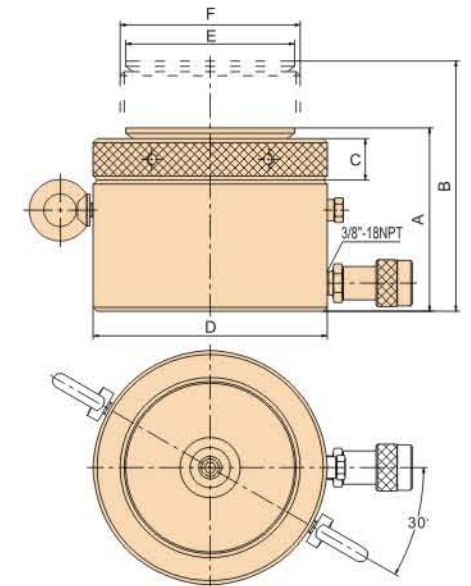


ELL-602, ELL-1002

ELL-SERIES PANCAKE LOCKNUT CYLINDERS

► Features

- ◆ Extremely low height for use in confined spaces.
- ◆ Safety lock nut for mechanical load holding.
- ◆ Tilting saddle.
- ◆ Complies with ASME B30.1. High strength steel for durability and increased safety.
- ◆ Overflow port functions as a stroke limiter.
- ◆ High flow EAB-201 quick coupler.
- ◆ Environmentally friendly painting process provides a durable corrosion resistant finish.



Cylinder Capacity @ 700 Bar (10,000 PSI)	Stroke	Model	Cylinder Effective Area	Oil Capacity	Collapsed Height	Extended Height	Lock Nut height	Outside Diameter	Saddle diam.	Piston Rod Diameter	Weight
Metric Ton (US Ton)	in		in ²	in ³	A	B	C	D	E	F	lbs
60 (66)	1.97	ELL-602	13.42	26.41	6.88	6.88	1.10	5.50	3.77	Tr 104 × 4	31.9
100 (110)	1.97	ELL-1002	22.18	43.65	7.35	7.35	1.22	6.88	4.95	Tr 134.5 × 6	51.7
160 (176)	1.77	ELL-1602	35.19	62.31	7.58	7.58	1.57	8.61	6.29	Tr 170 × 6	91.3
200 (220)	1.77	ELL-2002	43.94	77.82	7.86	7.86	1.69	9.63	7.07	Tr 190 × 6	125.4
250 (275)	1.77	ELL-2502	56.28	99.67	8.02	8.02	1.73	10.81	7.86	Tr 215 × 6	162.8
400 (440)	1.77	ELL-4002	85.48	151.39	8.76	8.76	2.16	13.76	9.83	Tr 265 × 6	294.8
520 (572)	1.77	ELL-5002	113.24	200.55	9.31	9.31	2.44	15.72	11.4	Tr 305 × 6	415.8